

Converting TESLA 4003 Setting Files

For Use on TESLA 4000 and TESLA 3000

This document explains how to manually convert TESLA 4003 setting configurations to setting configurations for TESLA 3000 and TESLA 4000 recorders. Currently automated TESLA 4003 setting configuration conversions to different recorder models is not supported therefore manual conversion is necessary to the following recorders:

- TESLA LITE – v4.01 or higher
- TESLA 2000 (18 or 36 analog Channels) – v 1 to v7 (or higher)
- TESLA 3000 (18 or 36 analog Channels) – v2.01 to v2.05 (or higher)
- TESLA 4000 (18 or 36 analog Channels) – v4.01 to v4.05 (or higher)

Software tools required:

- TESLA Control Panel (TCP) – it is recommended to use the latest version of TCP, latest versions are always posted on our website (www.erlphase.com). In this application TCP v2.4 was used.
- Wordpad – word processor included for Microsoft Windows

Procedure:

1. Create a duplicate copy of the setting file that requires conversion and place it in a working folder which is accessible to you. This step is important as a backup copy in case an issue is encountered during conversion.
2. Right click on the working setting file and open in a “Wordpad” file. On the first page you should see information similar to that shown in Figure 1. Also take note of the number of analog channels.
3. Under the Serial Number line, change “4003” to “4000”, and also change the first 4 characters written on top of the document. In Figure 1 the “5086” should be changed to “Noch”. Take note that different configuration files display different characters and ensure that no spaces are added (could mistakenly make the TESLA Control Panel think that the configuration is a TESLA 4000 configuration). Save the file after applying the changes and close Wordpad.

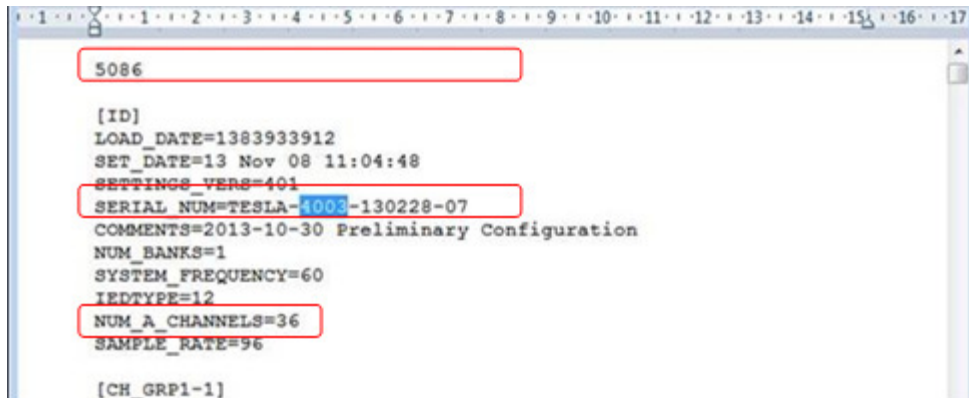


Figure 1 - WordPad Screen

4. Open TESLA Control Panel and select the IED name where you will be saving the file. If you don't yet have an IED name, create one now. In the example below we will be converting the TESLA 4003 setting v4.01 to TESLA 3000 setting v2.04.

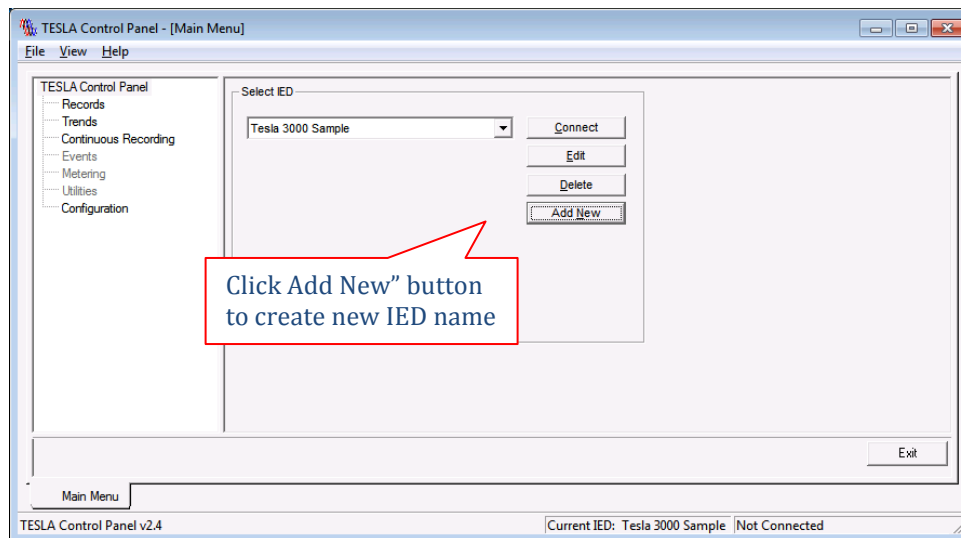


Figure 2 - Main Menu

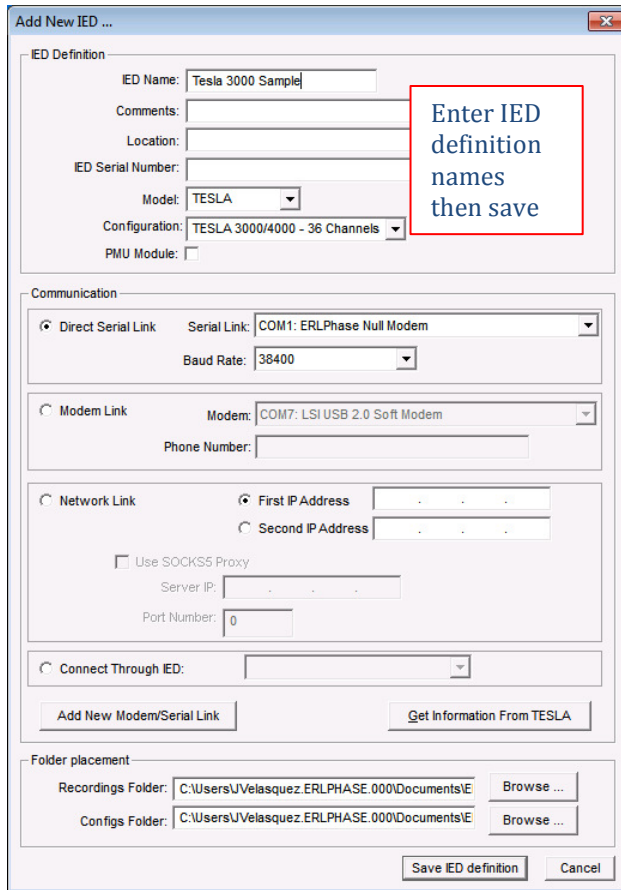


Figure 3 - Add New IED Screen

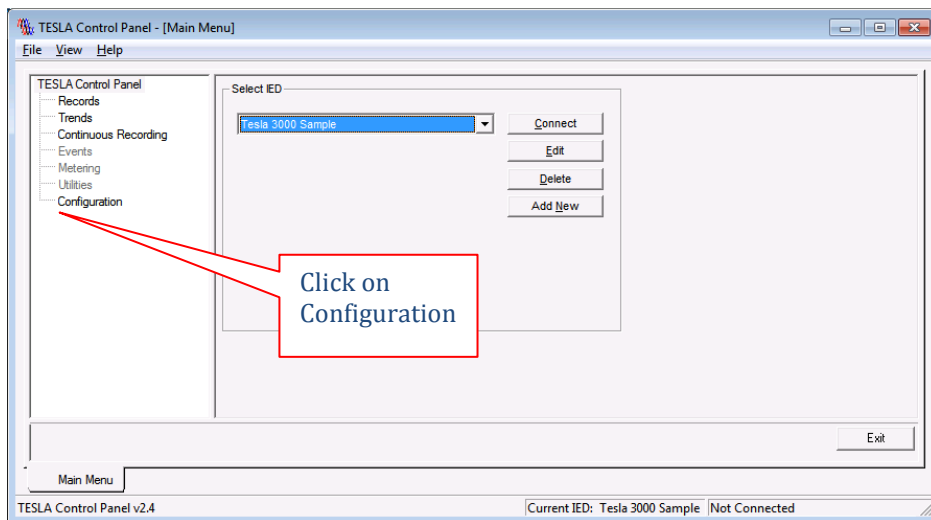


Figure 4 - Main Screen

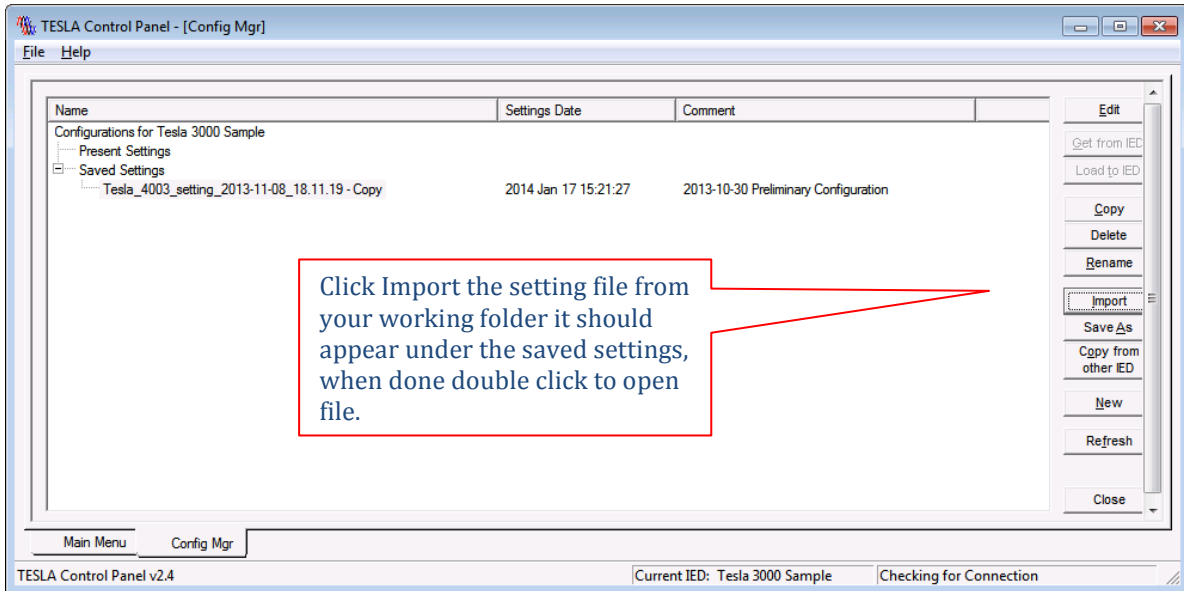


Figure 5 - Configure Manager Screen

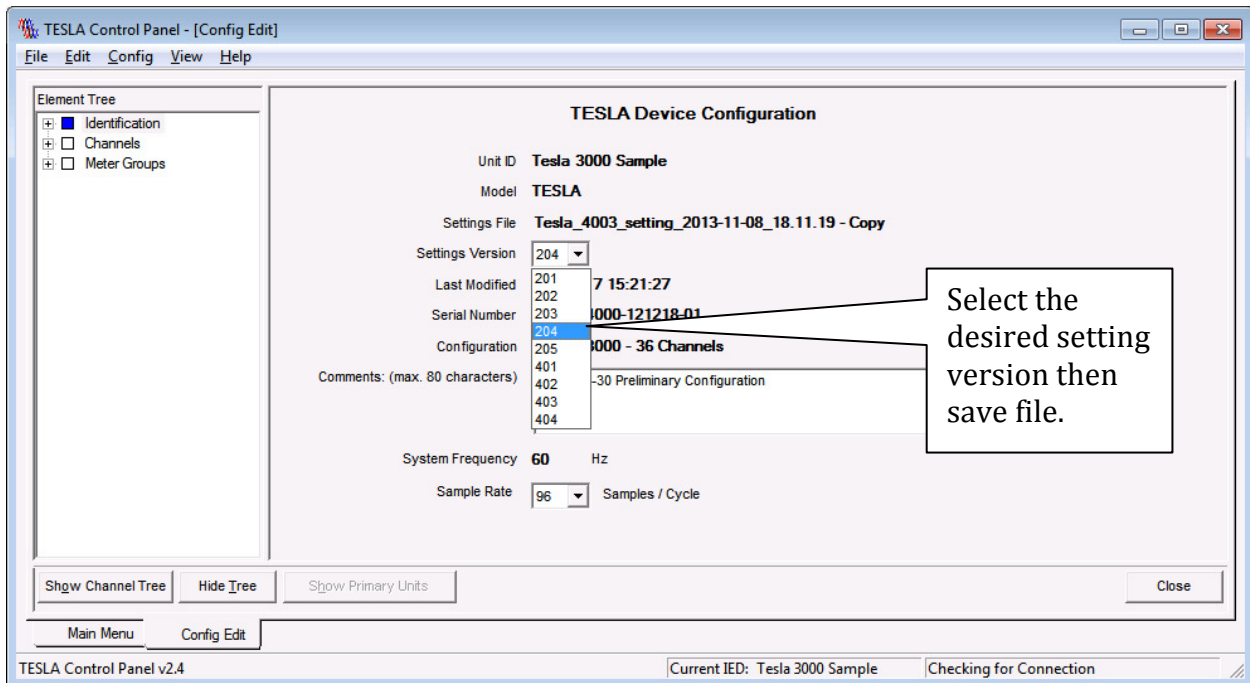


Figure 6 - TESLA Device Configuration Screen to select Setting Version

After saving the setting file, conversion is now complete. You may now connect and load settings to the recorder.