

Disabling Cooperative Group Setting In TESLA 3000 and 4000

The steps below will guide users to disable the cooperative group setting on a TESLA 3000 or 4000 recorder. This application note assumes that both recorder and the PC are already connected on the same subnet (not be discussed in this document).

To begin the process, start TESLA Control Panel and create a new IED by clicking the “Add New” button.

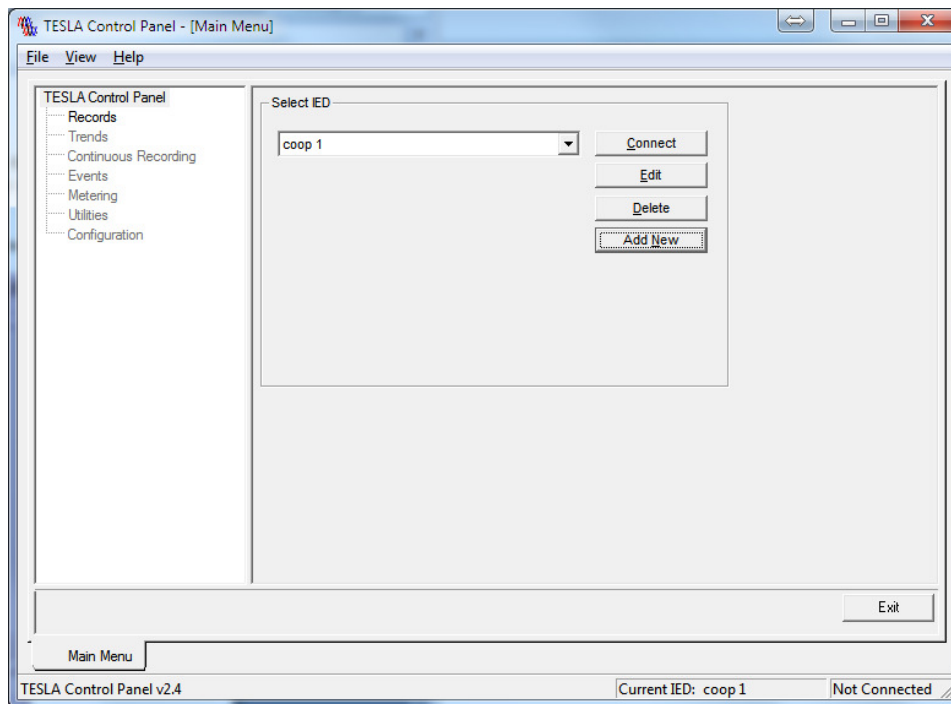


Figure 1 - TESLA Control Panel Connection Screen

Refer to Figure 3 for details about the following steps. Provide an IED name (in this case “coop 1” was selected), and select the required configuration “TESLA 4000 – cooperative mode”. At this point TESLA Control Panel will warn that coop mode configuration only works with TESLA products of the same family (in this case, only with TESLA 4000 models).

The following message will appear on the screen:

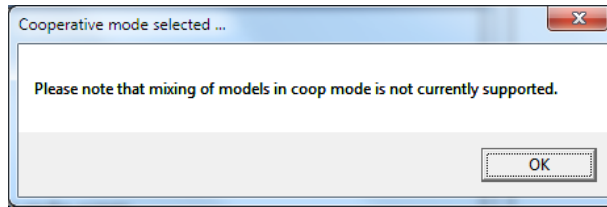


Figure 2 - Coop Mode Only with TESLAs of the Same Family

Under “Connect Through IED”, select the unit available to be used as a master unit (in this case “TESLA 4000 CS” was selected), and then click on “Save IED Definition”. Verify that all the units that will be required in this coop group are listed under the dropdown list associated to the master IED.

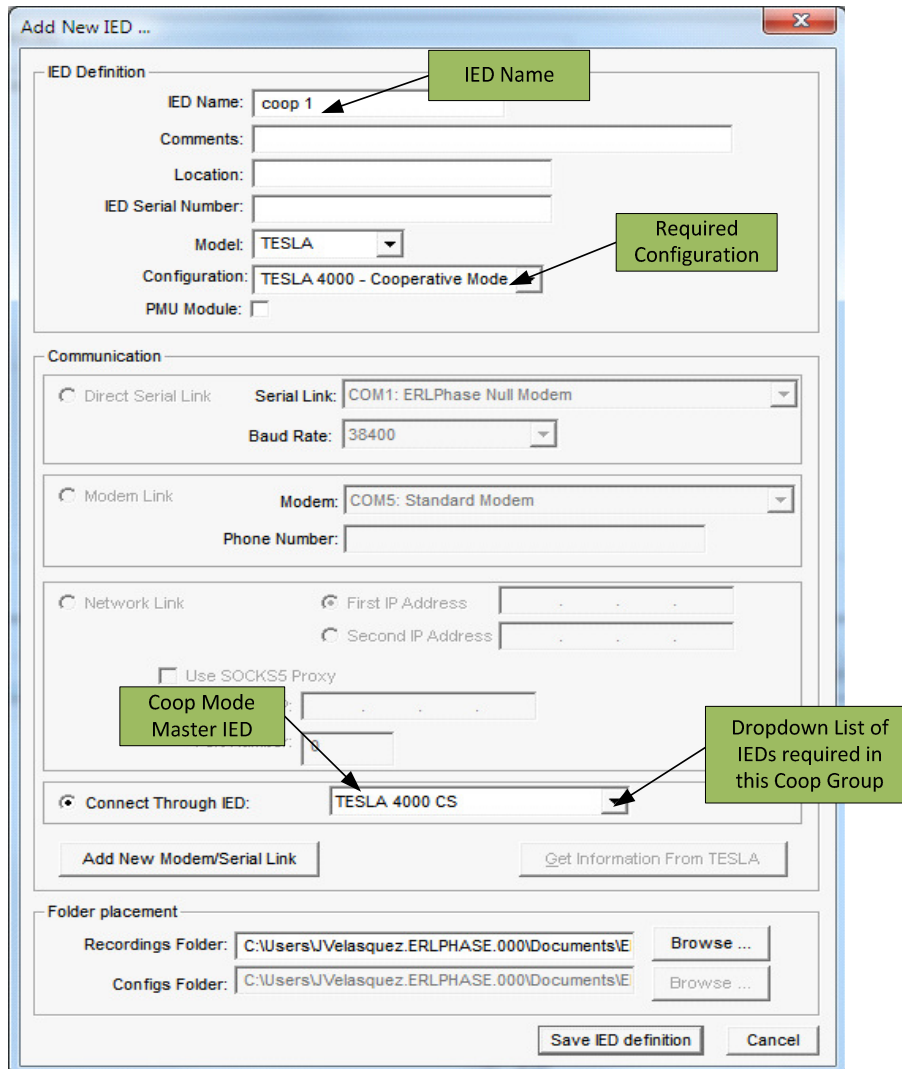


Figure 3 - Cooperative Mode Setup Screen

After connecting as shown in Figure 4, click on “Utilities” to access the coop group members associated to the master that was selected in the previous step. The screen below will be displayed showing information and the status of the members.

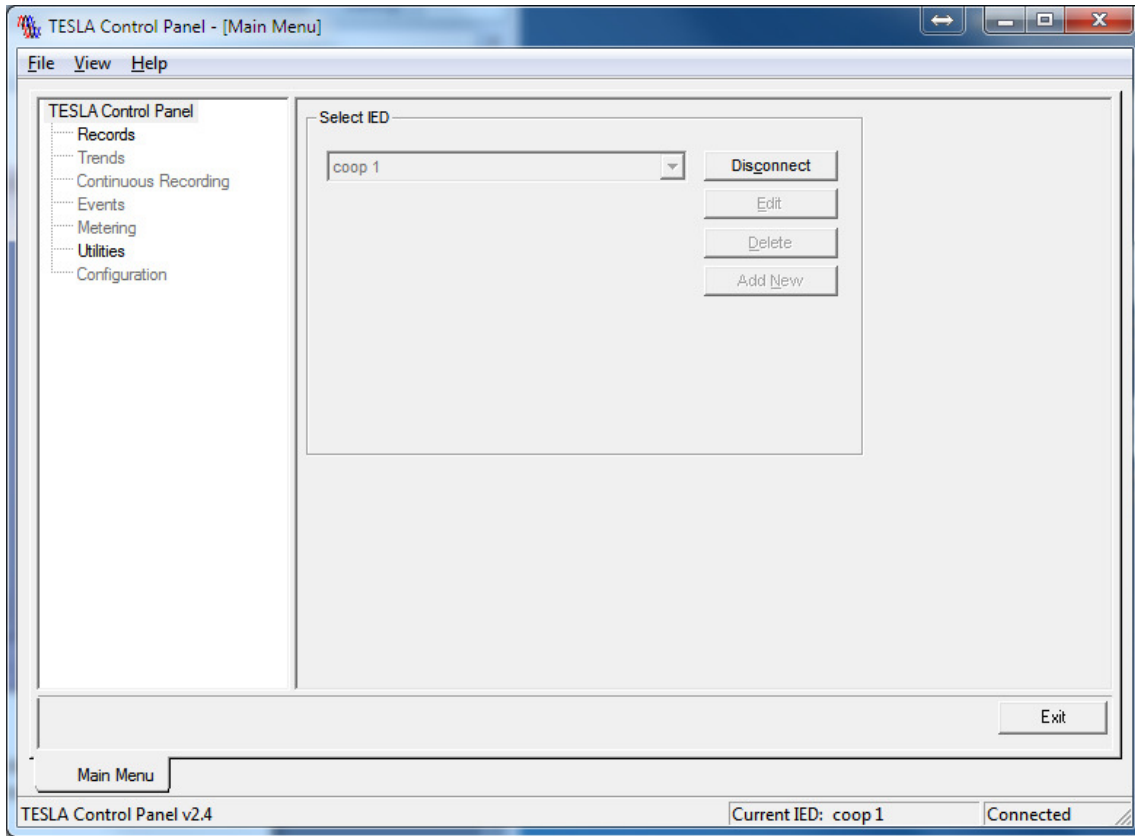


Figure 4 - Select Utility from the Main Menu

If there are active members, uncheck “Enable Cooperative Mode” to disable the grouping and click on the “Save” button. Upon clicking the “Save” button, the TESLA Control Panel will send a message to all members of the cooperative group to disable the setting.

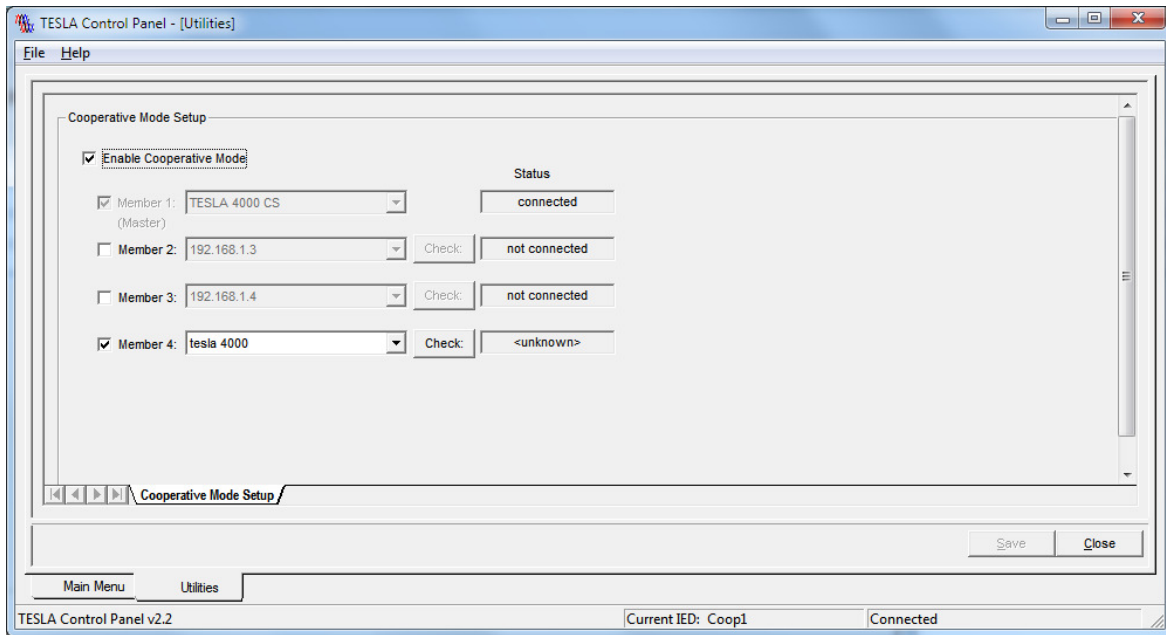


Figure 5 - Coop Group Membership List

The screenshot below shows that Cooperative Group is now deactivated. Click the “Close” button to end the session.

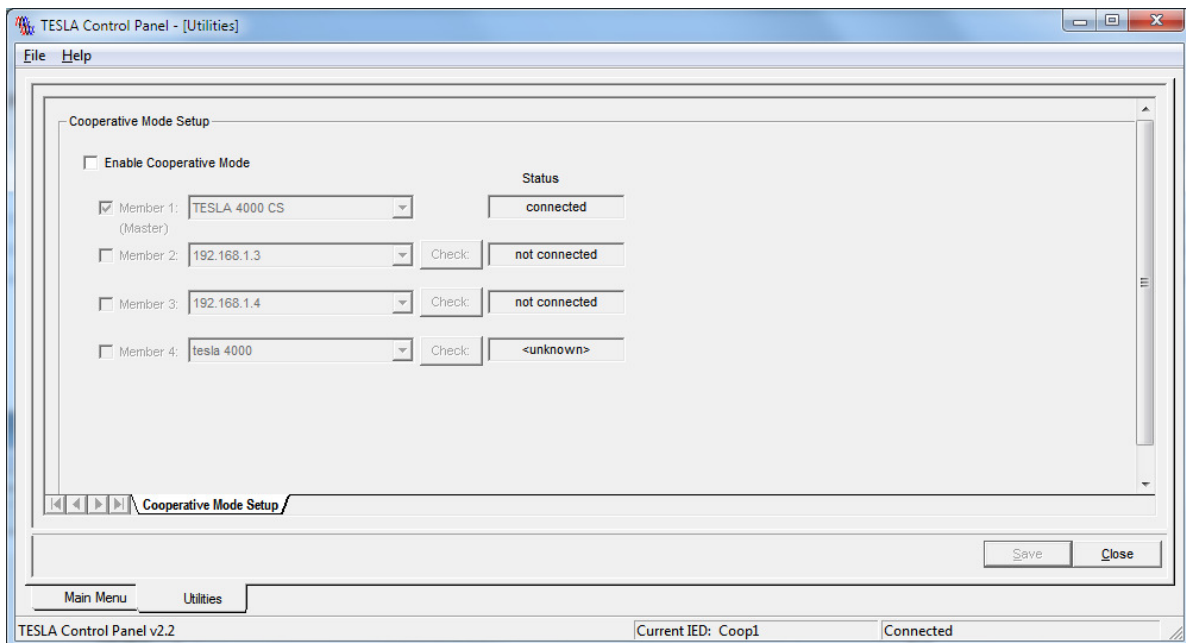


Figure 6 - Coop Group Deactivated