

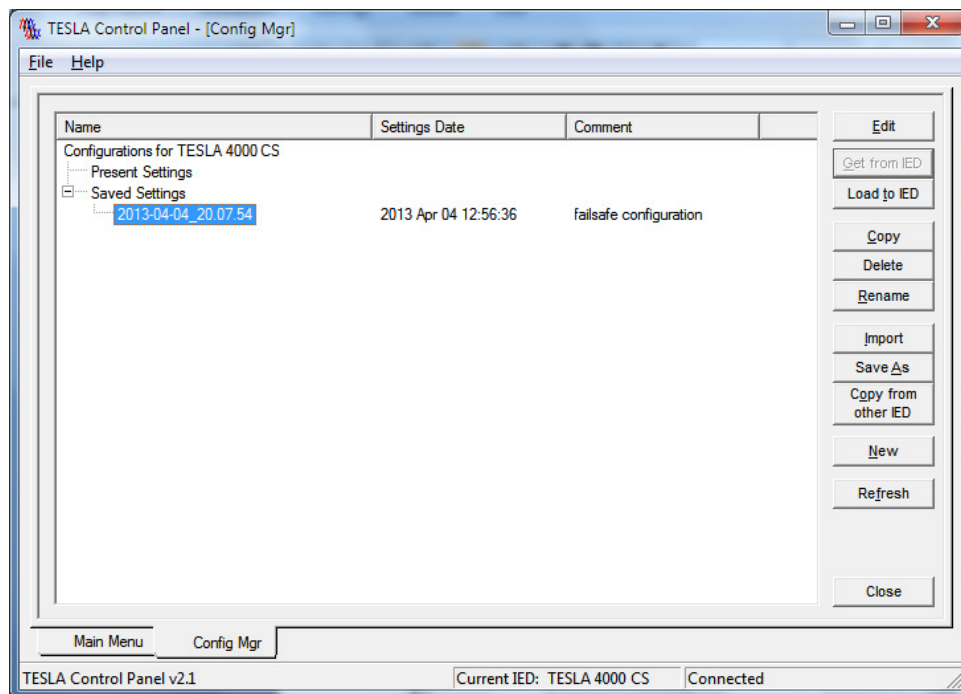
## Fixing a Corrupt TESLA Recorder Config File

This note explains how to proceed if you encounter error messages (eg. “IED Returned False”) when loading configuration files from colleagues into the TESLA Recorder.

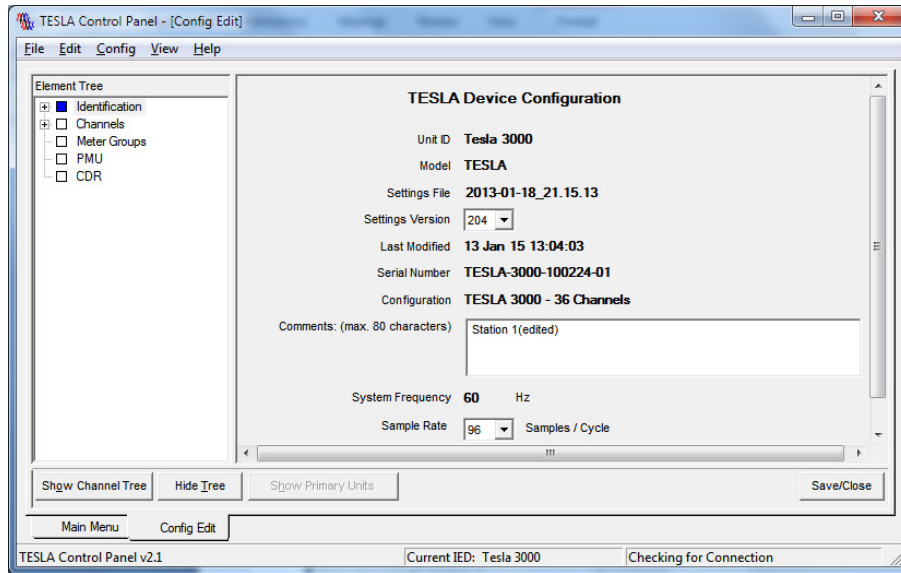
Error messages usually indicate a corrupt setting file. Note that we recommend users avoid using text editor software to open and make changes to configuration files. Rather, to ensure no data is lost while editing, we recommend using TESLA Control Panel software to edit the configuration file.

In the event that you do encounter errors, first create a duplicate copy of your setting file as a backup and then follow the instructions below.

1. Using TESLA Control Panel, import and then open your configuration file.



2. With the file open, edit the “Comments” portion of the configuration screen. In this example we have added the word “(edited)” only for illustration; any changes in the setting file will activate the “Save” button located at the lower right corner of the screen. Save the file and TESLA Control Panel will automatically correct the error in the configuration file. Now reload the setting file into the recorder and error messages should no longer appear.



3. To double-check the changes, users can employ third party setting file comparator tools, downloadable from the internet, such as Beyond Compare (by Scooter Software) or Altap Salamander.