

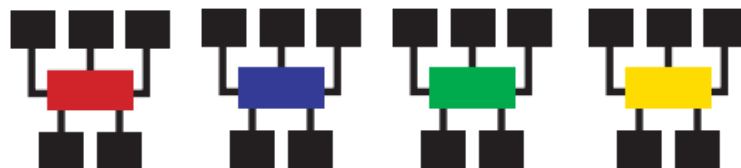


Installation Instructions for RecordBase Central Station Without MS Access Runtime

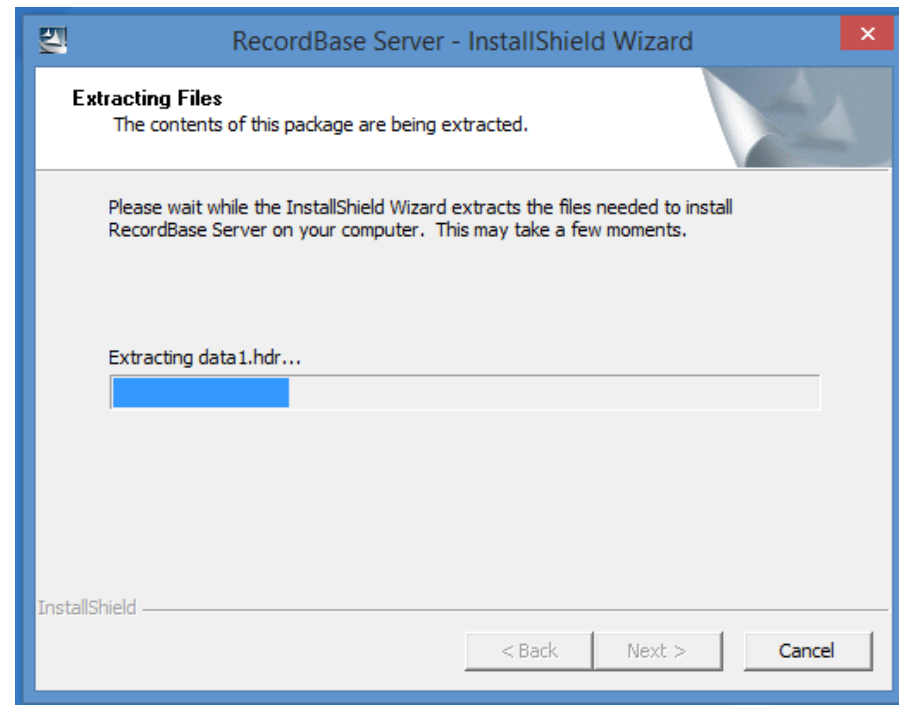
The following procedure will explain the installation of RecordBase Central Station without MS Access Runtime.

You will need the following:

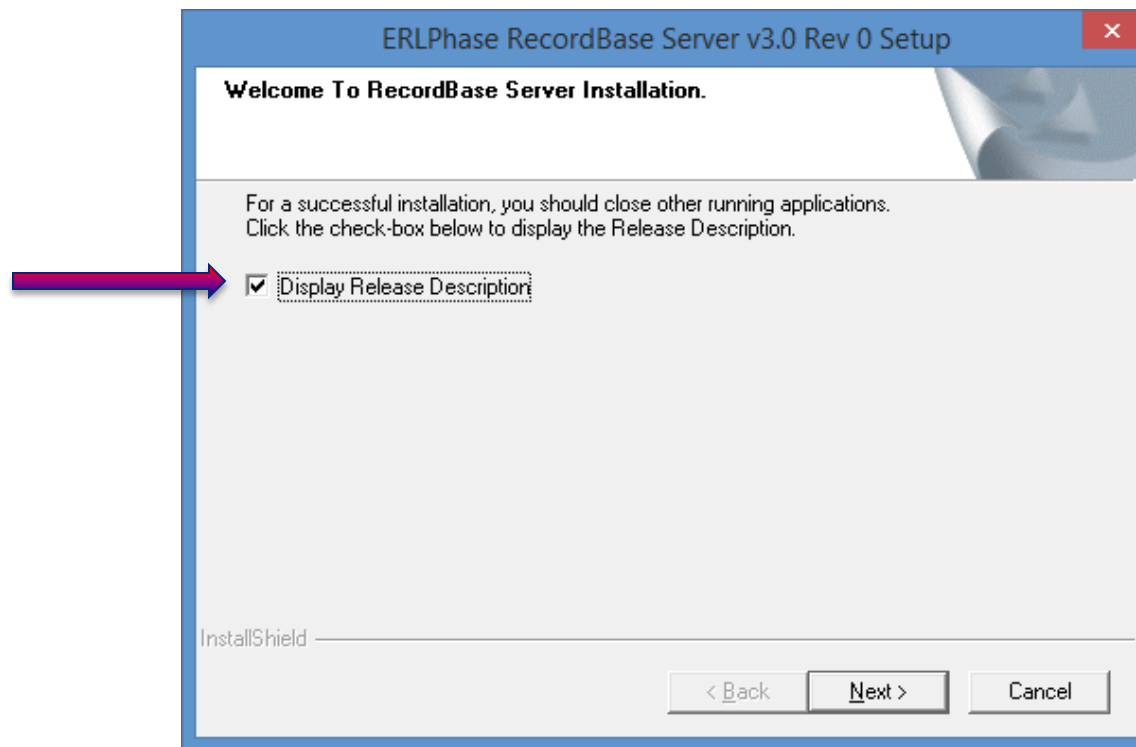
- RecordBase Central Station software
- PC running Windows XP Professional Service Pack 3 or Windows 7 Professional Service Pack 1, 32/64 bit
- RecordBase Central Station is composed of 4 modules; Administrator, Collector, Monitor and System Manager



- Insert RecordBase Central Station CD (or locate the installation file provided to you).
- Double click on the installation file and the installation will begin after this point.



- You will be prompted to display the release description of RecordBase Central Station. To see the major improvements on the newest version, please checkmark that option and click “Next”.



Installation



- After reading the release description, enter your name and the company where RecordBase Central Station will be registered.

A screenshot of a Windows-style dialog box titled "ERLPhase RecordBase Server v3.0 Rev 0 Setup". The dialog has a blue header bar with a close button (X) in the top right corner. The main content area is white and contains the following text and fields:

Customer Information
Please enter your information.

Please enter your name and the name of the company for which you work.

User Name:

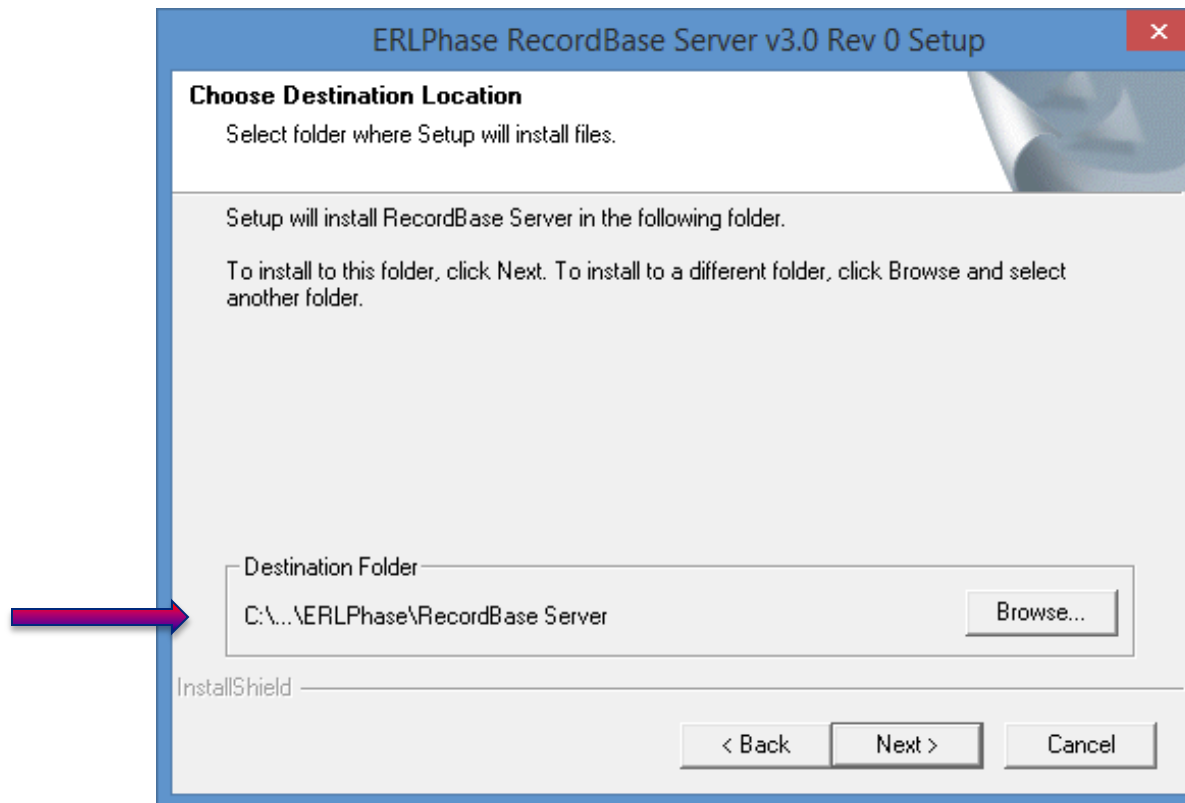
Company Name:

InstallShield

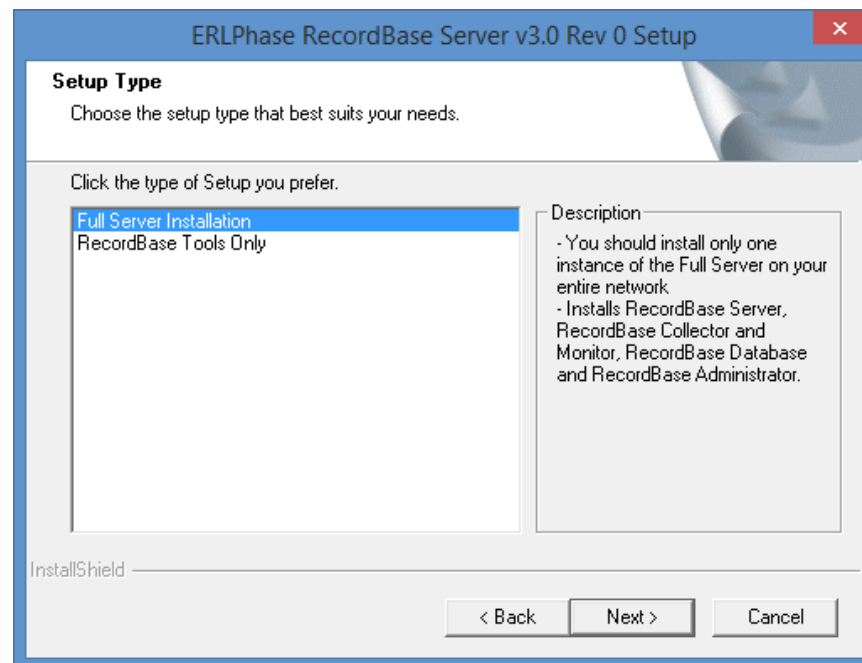
< Back Next > Cancel

A red arrow points from the left side of the slide to the "User Name" text box.

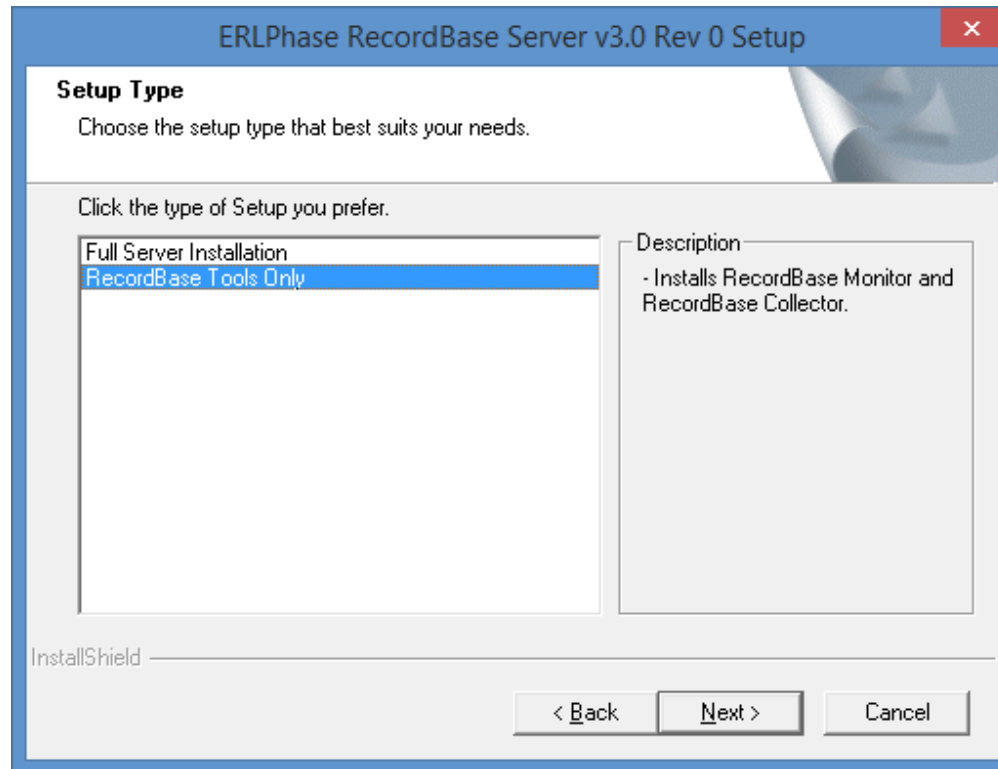
- The installation routine will have a default location where the software will be installed, which can be changed if the default location is not suitable.



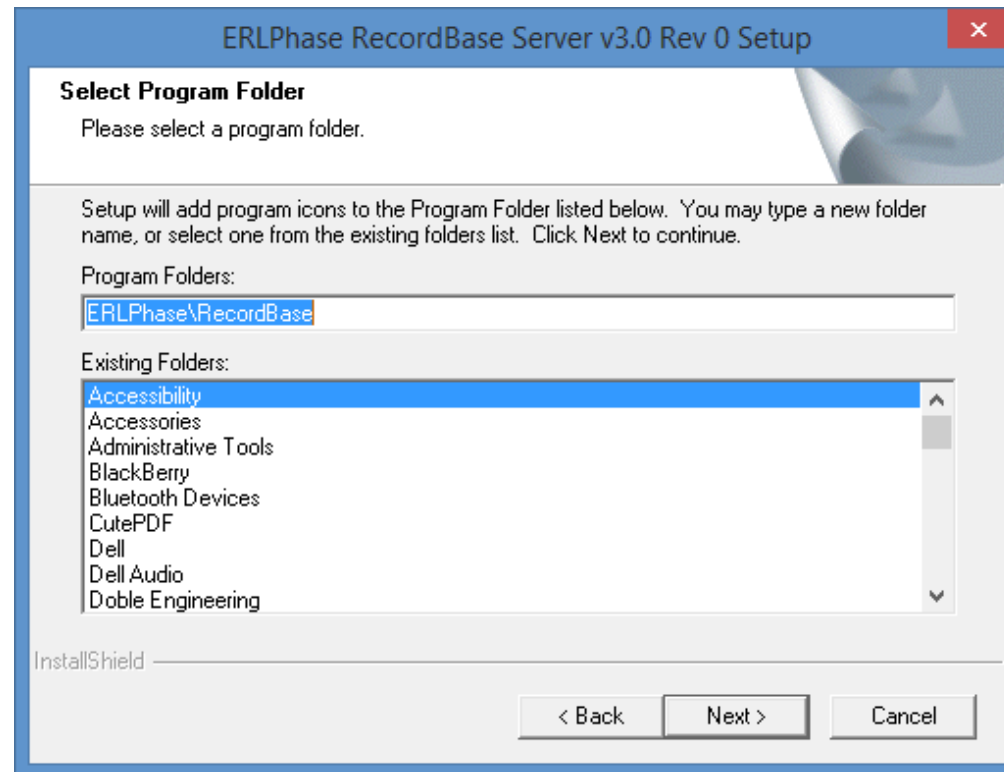
- There are two types of installation; Full Server Installation and RecordBase Tools Only.
- Full Server Installation makes a complete installation of RecordBase Central Station.



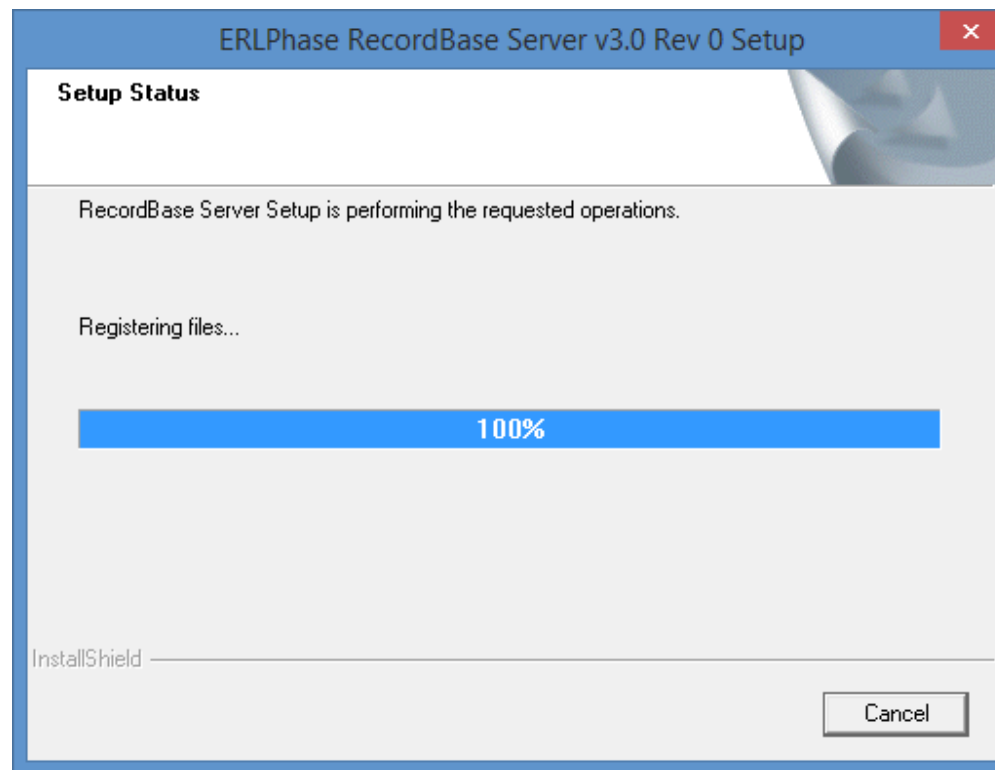
- 'RecordBase Tools Only' installation will only install RecordBase Monitor and RecordBase Collector.



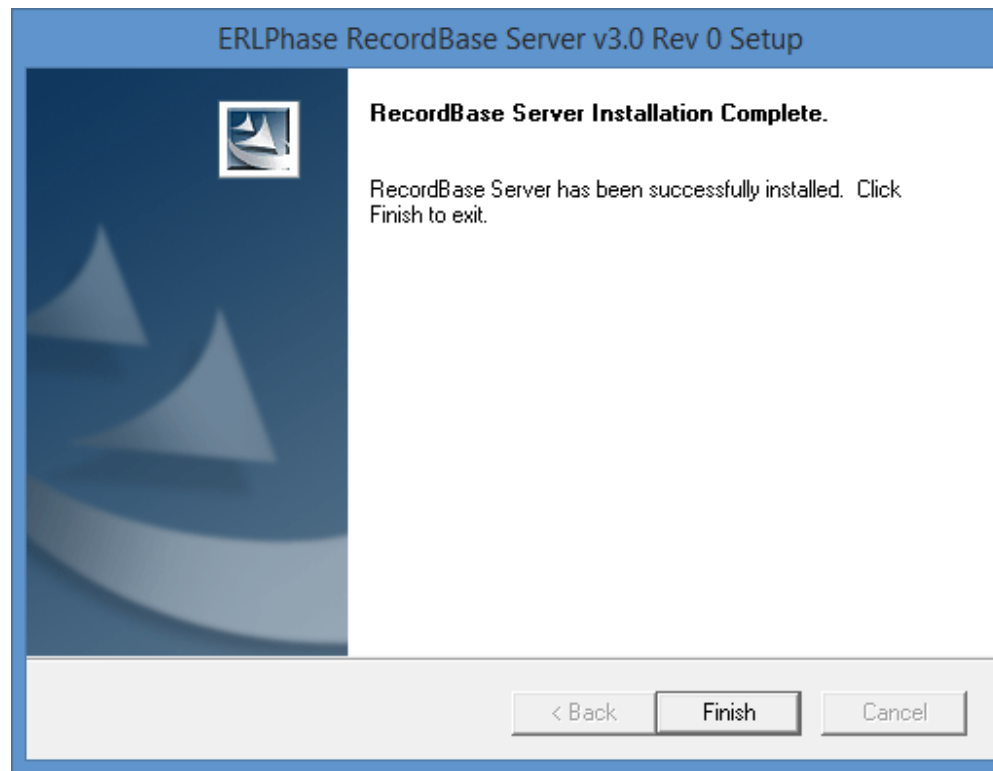
- RecordBase Central Station will define a folder where all of its files will be located. Please select one if there is a specific need to use a different location, otherwise click “Next” and files will be saved in a default location.



- After selecting the folder where the files will be stored, the installation routine will begin to install the software.

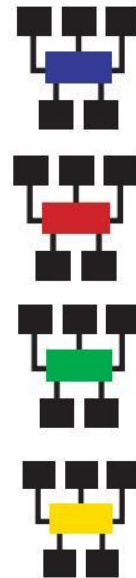


- Once the installation bar reaches 100%, RecordBase Central Station will have completed the installation.

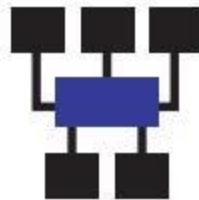


- To start using RecordBase Central Station, the software has four tools which perform different functions and work in synchrony to retrieve the Records remotely.

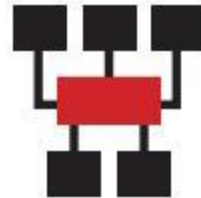
- RecordBase System Manager
- RecordBase Administrator
- RecordBase Collector
- RecordBase Monitor



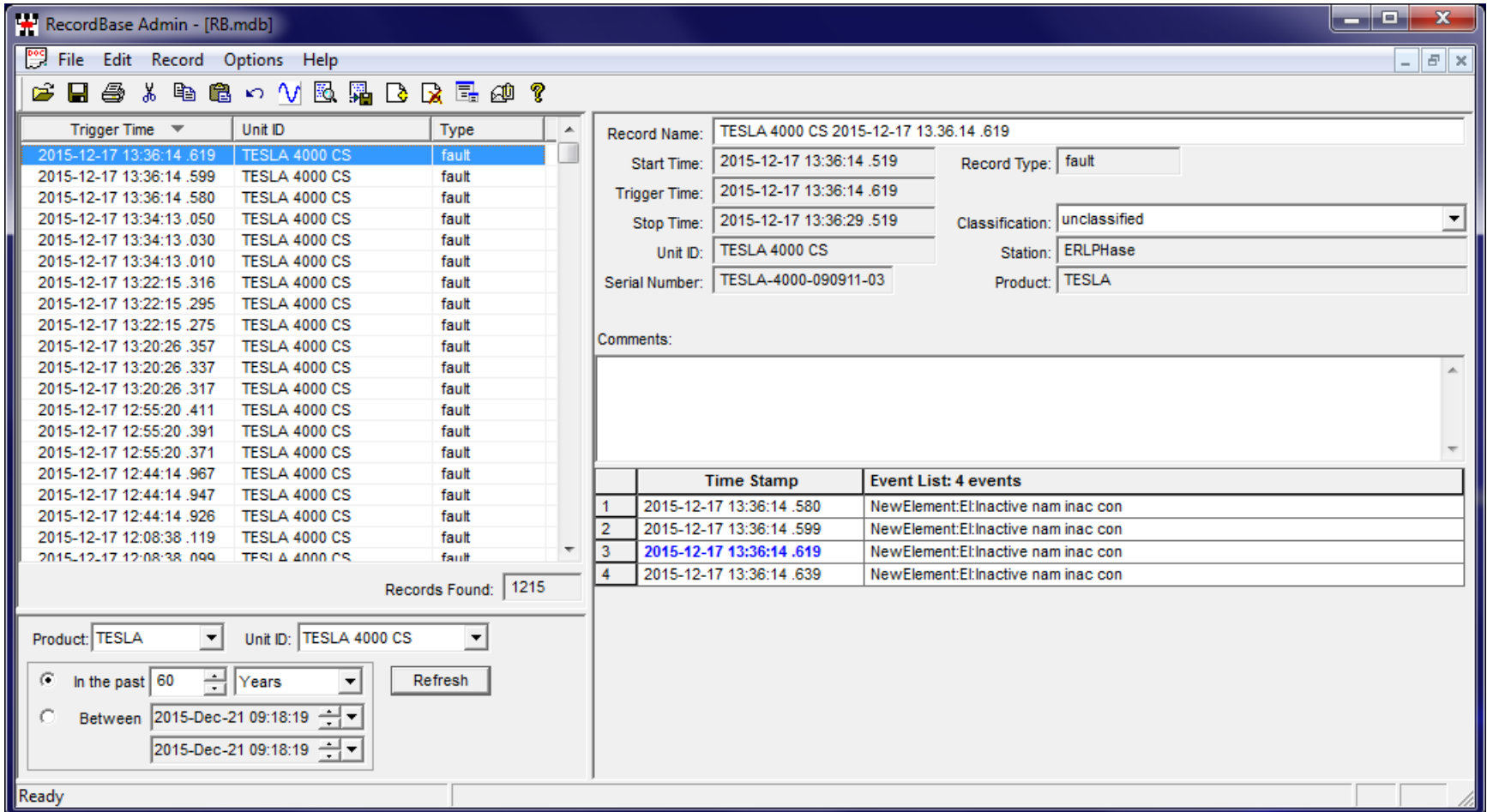
- RecordBase System Manager will be the first tool that must be used to initiate RecordBase Central Station.
- This is a tool that will run in the background only after it has been activated (user need not to set any configurations in the System Manager).



- RecordBase Administrator is the tool that will allow the user to access the data base where all the records will be stored.



- General screen of RecordBase Administrator



The screenshot shows the RecordBase Administrator interface. The main window is titled "RecordBase Admin - [RB.mdb]". It features a menu bar (File, Edit, Record, Options, Help) and a toolbar with various icons. The central area is divided into several sections:

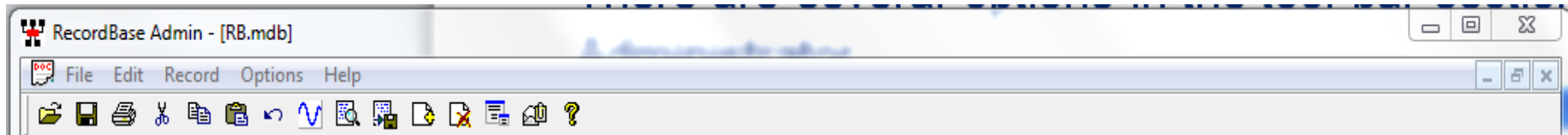
- Table:** A table with columns "Trigger Time", "Unit ID", and "Type". It lists multiple fault records for "TESLA 4000 CS". The record with "Trigger Time" 2015-12-17 13:36:14 .619 is highlighted in blue.
- Record Details:** A form on the right showing details for the selected record:
 - Record Name: TESLA 4000 CS 2015-12-17 13.36.14 .619
 - Start Time: 2015-12-17 13:36:14 .519
 - Trigger Time: 2015-12-17 13:36:14 .619
 - Stop Time: 2015-12-17 13:36:29 .519
 - Unit ID: TESLA 4000 CS
 - Serial Number: TESLA-4000-090911-03
 - Record Type: fault
 - Classification: unclassified
 - Station: ERLPhase
 - Product: TESLA
- Comments:** A text area for adding comments.
- Event List:** A table with 4 events:

	Time Stamp	Event List: 4 events
1	2015-12-17 13:36:14 .580	NewElement:EI:inactive nam inac con
2	2015-12-17 13:36:14 .599	NewElement:EI:inactive nam inac con
3	2015-12-17 13:36:14 .619	NewElement:EI:inactive nam inac con
4	2015-12-17 13:36:14 .639	NewElement:EI:inactive nam inac con
- Search/Filter:** A section at the bottom left with dropdowns for "Product" (TESLA) and "Unit ID" (TESLA 4000 CS). It includes radio buttons for "In the past" (60 Years) and "Between" (2015-Dec-21 09:18:19 to 2015-Dec-21 09:18:19), along with a "Refresh" button.

The status bar at the bottom left shows "Ready".

Administrator Tool Bar

- There are several modified options in the tool bar section for the Administrator:



- File – Gives the option to open, close, print or exit the utility
- Edit – Allows the user to undo the last action, cut, copy or paste
- Record has these options:
 - Graph - Opens RecordGraph with the selected Record
 - View Setting (temporary unavailable) – Shows the settings of the Record
 - Save Settings – Saves the settings from the Record in a .tls file
 - Add – Adds Records to the data base
 - Delete – Deletes Selected Record
 - Save to – Saves the records into another location
 - Export – Exports records into COMTRADE, PTI or Excel files
 - Send – Sends selected record(s) to an email account

Administrator Tool Bar (continued)

- Options – Enables user to add a record to the database and a Record Classification for each record that can be manually assigned a classification when it has been analyzed
- Help – Users Manual shortcut and '?' is 'About' and shows RB Admin version

Administrator Main Screen



- The main screen gives information about each selected Record.

The screenshot displays the RecordBase Admin interface. On the left, a table lists records with columns for Trigger Time, Unit ID, and Type. The record with Trigger Time 2015-12-17 13:36:14 .619 is selected. On the right, a detailed view for this record is shown, including fields for Record Name, Start Time, Trigger Time, Stop Time, Unit ID, Serial Number, Record Type, Classification, Station, and Product. Below this is a Comments section and an Event List table.

Trigger Time	Unit ID	Type
2015-12-17 13:36:14 .619	TESLA 4000 CS	fault
2015-12-17 13:36:14 .599	TESLA 4000 CS	fault
2015-12-17 13:36:14 .580	TESLA 4000 CS	fault
2015-12-17 13:34:13 .050	TESLA 4000 CS	fault
2015-12-17 13:34:13 .030	TESLA 4000 CS	fault
2015-12-17 13:34:13 .010	TESLA 4000 CS	fault
2015-12-17 13:22:15 .316	TESLA 4000 CS	fault
2015-12-17 13:22:15 .295	TESLA 4000 CS	fault
2015-12-17 13:22:15 .275	TESLA 4000 CS	fault
2015-12-17 13:20:26 .357	TESLA 4000 CS	fault
2015-12-17 13:20:26 .337	TESLA 4000 CS	fault
2015-12-17 13:20:26 .317	TESLA 4000 CS	fault
2015-12-17 12:55:20 .411	TESLA 4000 CS	fault
2015-12-17 12:55:20 .391	TESLA 4000 CS	fault
2015-12-17 12:55:20 .371	TESLA 4000 CS	fault
2015-12-17 12:44:14 .967	TESLA 4000 CS	fault
2015-12-17 12:44:14 .947	TESLA 4000 CS	fault
2015-12-17 12:44:14 .926	TESLA 4000 CS	fault
2015-12-17 12:08:38 .119	TESLA 4000 CS	fault
2015-12-17 12:08:38 .099	TESLA 4000 CS	fault

Records Found: 1215

Product: TESLA Unit ID: TESLA 4000 CS

In the past 60 Years Between 2015-Dec-21 10:12:39 2015-Dec-21 10:12:39 Refresh

Record Name: TESLA 4000 CS 2015-12-17 13:36:14 .619

Start Time: 2015-12-17 13:36:14 .519 Record Type: fault

Trigger Time: 2015-12-17 13:36:14 .619

Stop Time: 2015-12-17 13:36:29 .519 Classification: unclassified

Unit ID: TESLA 4000 CS Station: ERLPhase

Serial Number: TESLA-4000-090911-03 Product: TESLA

Comments:

	Time Stamp	Event List: 4 events
1	2015-12-17 13:36:14 .580	NewElement:El:inactive nam inac con
2	2015-12-17 13:36:14 .599	NewElement:El:inactive nam inac con
3	2015-12-17 13:36:14 .619	NewElement:El:inactive nam inac con
4	2015-12-17 13:36:14 .639	NewElement:El:inactive nam inac con

Administrator Description Screen

The Description Screen gives a more detailed reading of the selected Record:

- Record Name
- Record Type
- Trigger Time
- Start Time
- Stop Time
- Unit ID
- Serial Number
- Classification
- Station Name
- Product
- Trigger Event and Event List
- User Comments

Admin Description Screen (continued)



RecordBase Admin - [RB.mdb]

File Edit Record Options Help

Trigger Time	Unit ID	Type
2015-12-17 13:36:14 .619	TESLA 4000 CS	fault
2015-12-17 13:36:14 .599	TESLA 4000 CS	fault
2015-12-17 13:36:14 .580	TESLA 4000 CS	fault
2015-12-17 13:34:13 .050	TESLA 4000 CS	fault
2015-12-17 13:34:13 .030	TESLA 4000 CS	fault
2015-12-17 13:34:13 .010	TESLA 4000 CS	fault
2015-12-17 13:22:15 .316	TESLA 4000 CS	fault
2015-12-17 13:22:15 .295	TESLA 4000 CS	fault
2015-12-17 13:22:15 .275	TESLA 4000 CS	fault
2015-12-17 13:20:26 .357	TESLA 4000 CS	fault
2015-12-17 13:20:26 .337	TESLA 4000 CS	fault
2015-12-17 13:20:26 .317	TESLA 4000 CS	fault
2015-12-17 12:55:20 .411	TESLA 4000 CS	fault
2015-12-17 12:55:20 .391	TESLA 4000 CS	fault
2015-12-17 12:55:20 .371	TESLA 4000 CS	fault
2015-12-17 12:44:14 .967	TESLA 4000 CS	fault
2015-12-17 12:44:14 .947	TESLA 4000 CS	fault
2015-12-17 12:44:14 .926	TESLA 4000 CS	fault
2015-12-17 12:08:38 .119	TESLA 4000 CS	fault
2015-12-17 12:08:38 .099	TESLA 4000 CS	fault

Records Found: 1215

Product: TESLA Unit ID: TESLA 4000 CS

In the past 60 Years Between 2015-Dec-21 10:12:39 2015-Dec-21 10:12:39

Ready

Record Name: TESLA 4000 CS 2015-12-17 13:36:14 .619

Start Time: 2015-12-17 13:36:14 .519 Record Type: fault

Trigger Time: 2015-12-17 13:36:14 .619

Stop Time: 2015-12-17 13:36:29 .519 Classification: unclassified

Unit ID: TESLA 4000 CS Station: ERLPhase

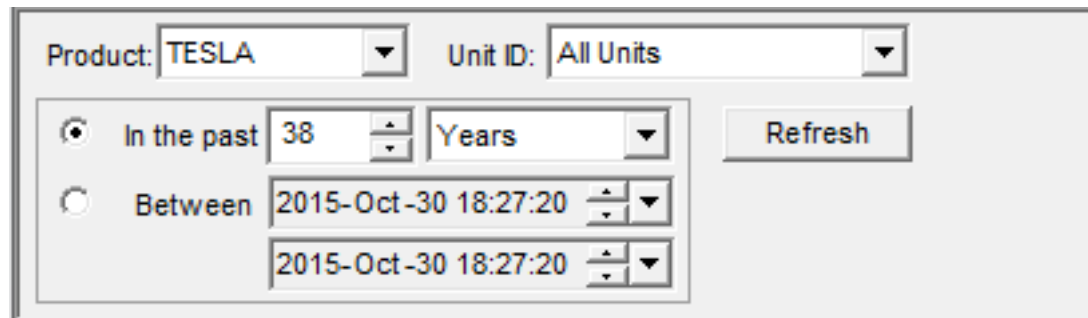
Serial Number: TESLA-4000-090911-03 Product: TESLA

Comments:

	Time Stamp	Event List: 4 events
1	2015-12-17 13:36:14 .580	NewElement:El:inactive nam inac con
2	2015-12-17 13:36:14 .599	NewElement:El:inactive nam inac con
3	2015-12-17 13:36:14 .619	NewElement:El:inactive nam inac con
4	2015-12-17 13:36:14 .639	NewElement:El:inactive nam inac con

Administrator Bottom Tool Bar

- The bottom tool bar acts as a filter to narrow the search of records for a certain unit or certain record.
- Filter via Product Type, Unit ID and Date.

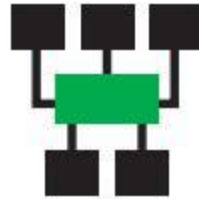
A screenshot of a web-based filter interface. At the top, there are two dropdown menus: 'Product' with 'TESLA' selected and 'Unit ID' with 'All Units' selected. Below these, there are two radio button options. The first is 'In the past' with a value of '38' in a spinner box and 'Years' in a dropdown menu. The second is 'Between' with two date-time input fields, both containing '2015-Oct-30 18:27:20'. To the right of these options is a 'Refresh' button.

Product: TESLA Unit ID: All Units

In the past 38 Years

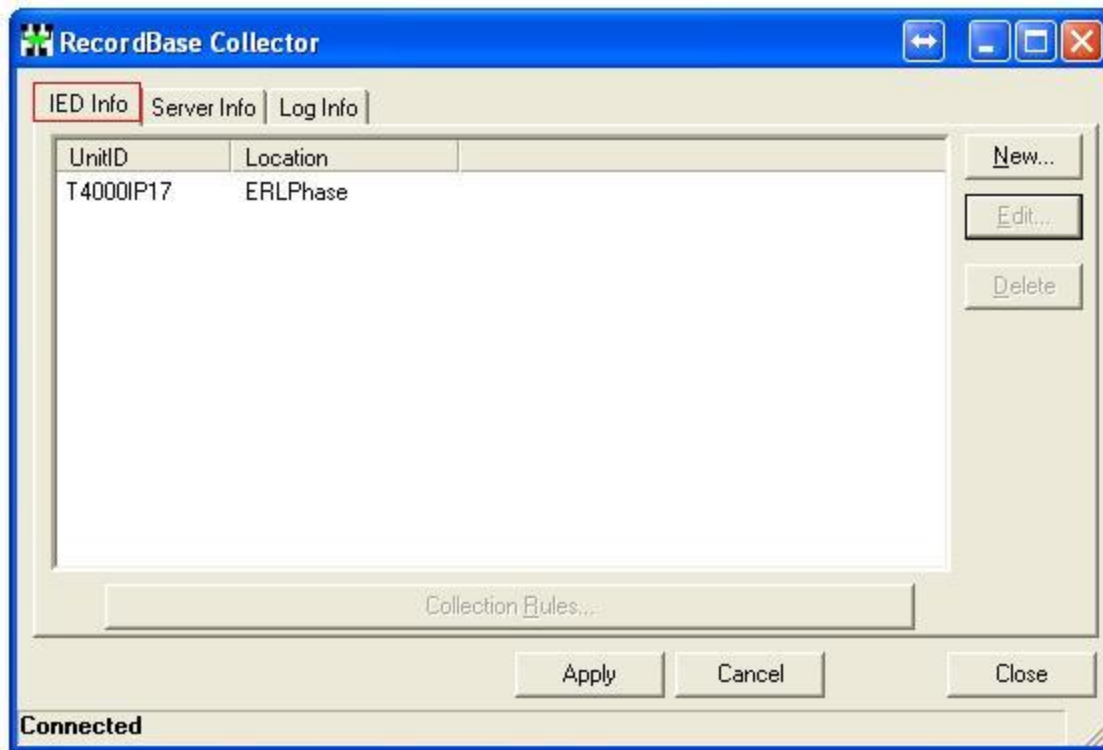
Between 2015-Oct-30 18:27:20 2015-Oct-30 18:27:20

- RecordBase Collector is the tool that is used to **configure** RecordBase's record retrieval and cross-triggering services. It also allows the user to add IED to the system for recollection of records.



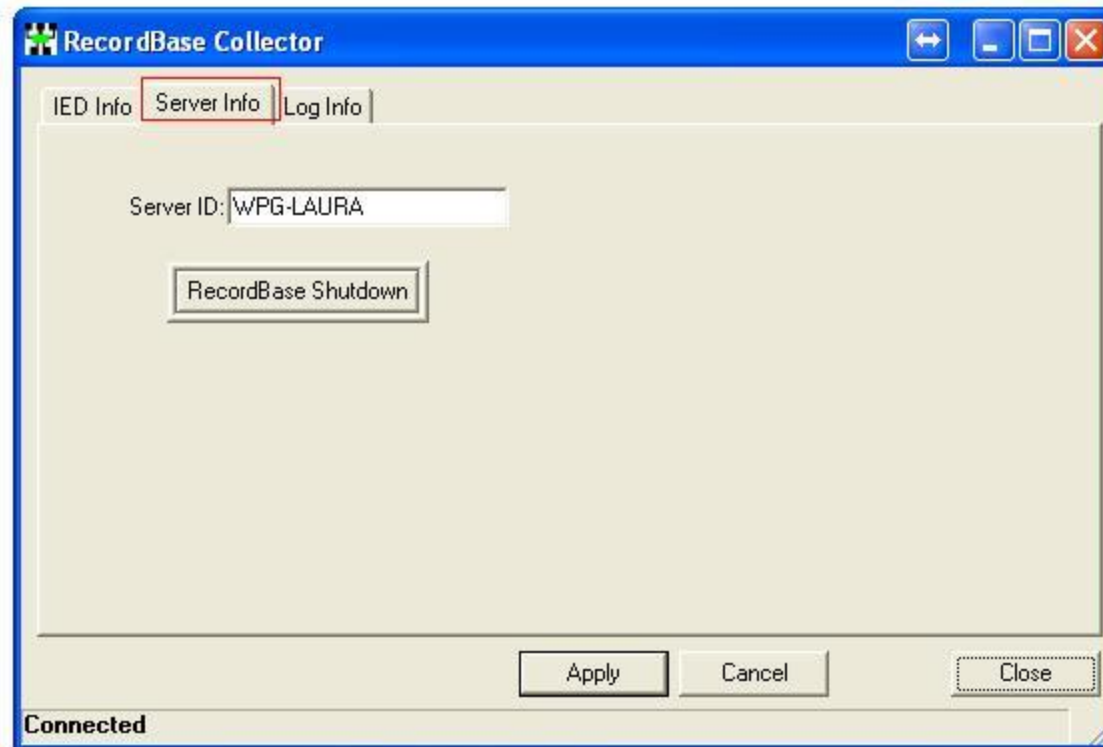
Collector IED Info

- IED Info tab:
Lists devices already added to the system, and enables users to add a new device, edit the device, or apply the collection rules.



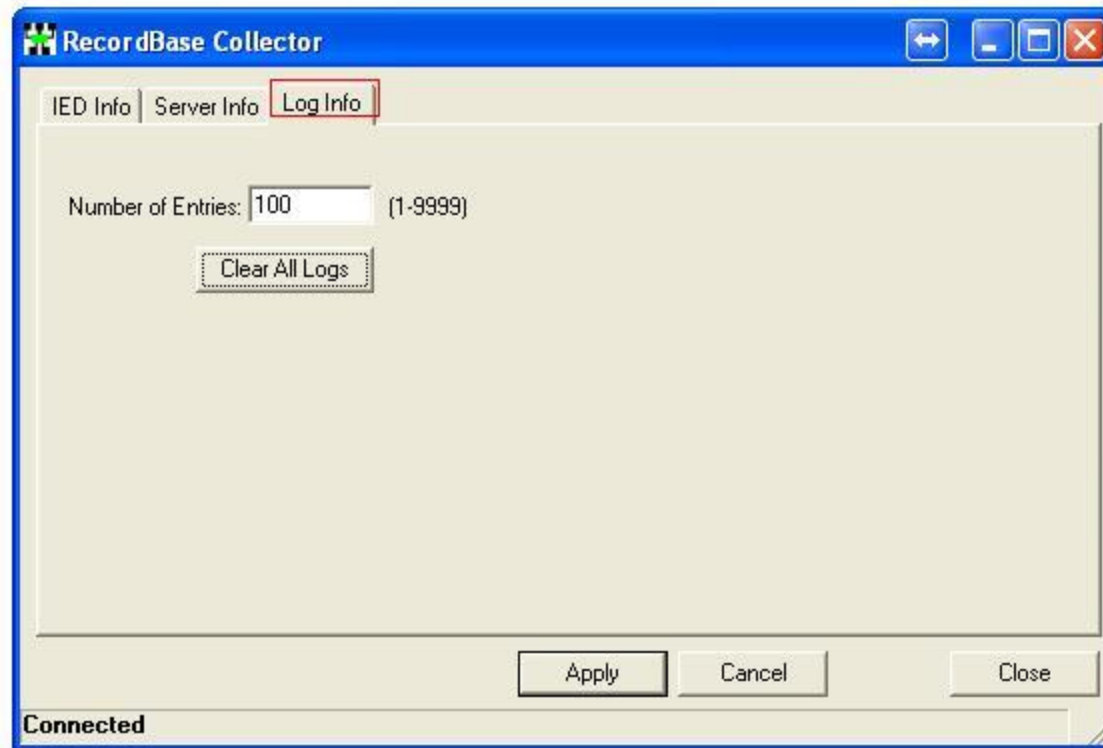
Collector Server Info

- The Server Info tab provides details on the name of the server running in RecordBase Central Station.
- It provides the ability to connect to other System Managers installed to change parameters in IED Info tab.

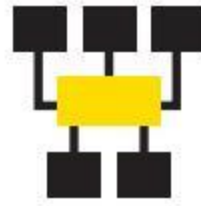


Collector Log Info

- The Log Info tab gives information on the limit that the RecordBase Central Station Monitor will have in the event log screen. The range of entries in the log are 1-9999.

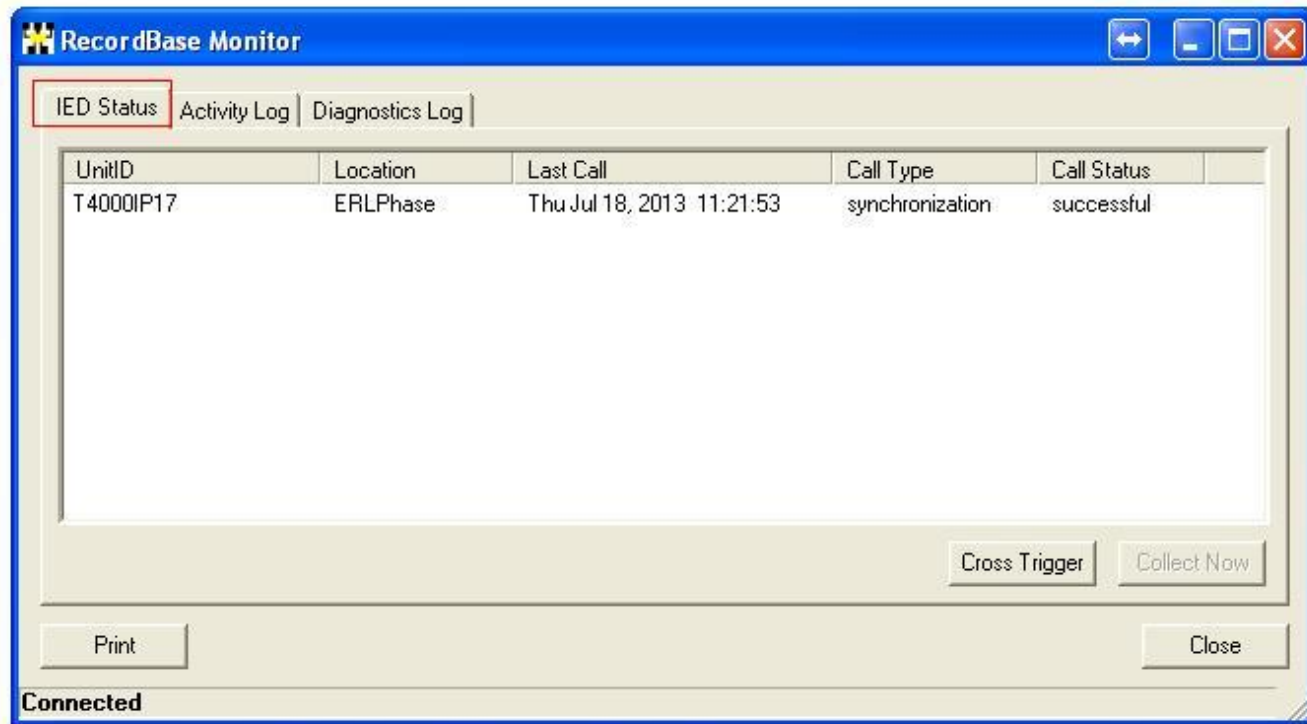


- RecordBase Central Station Monitor is the tool that allows the user to review the activity in real time for the system.



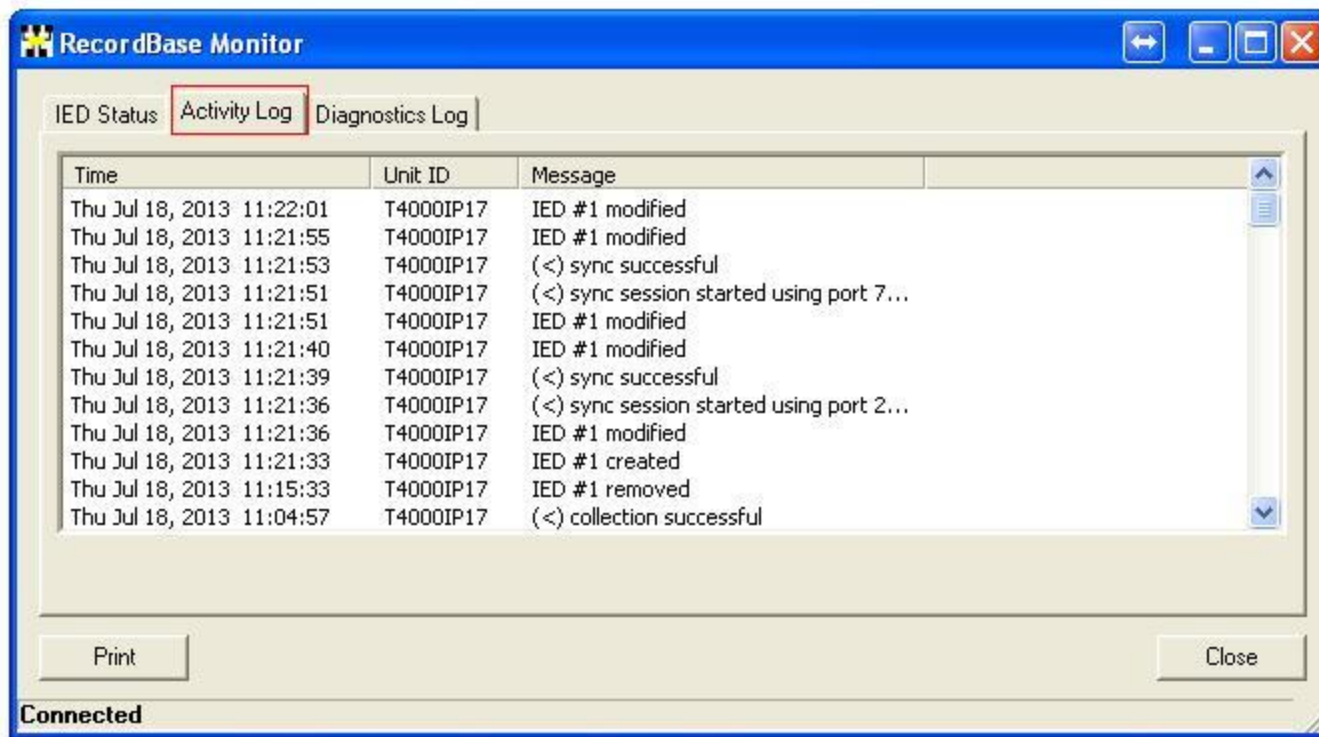
Monitor IED Status

- IED Status tab shows Unit ID, Location, Last Call, Call Type, Call Status.
- It also allows the user to make a Cross Trigger between other devices and to make a manual collection of records.



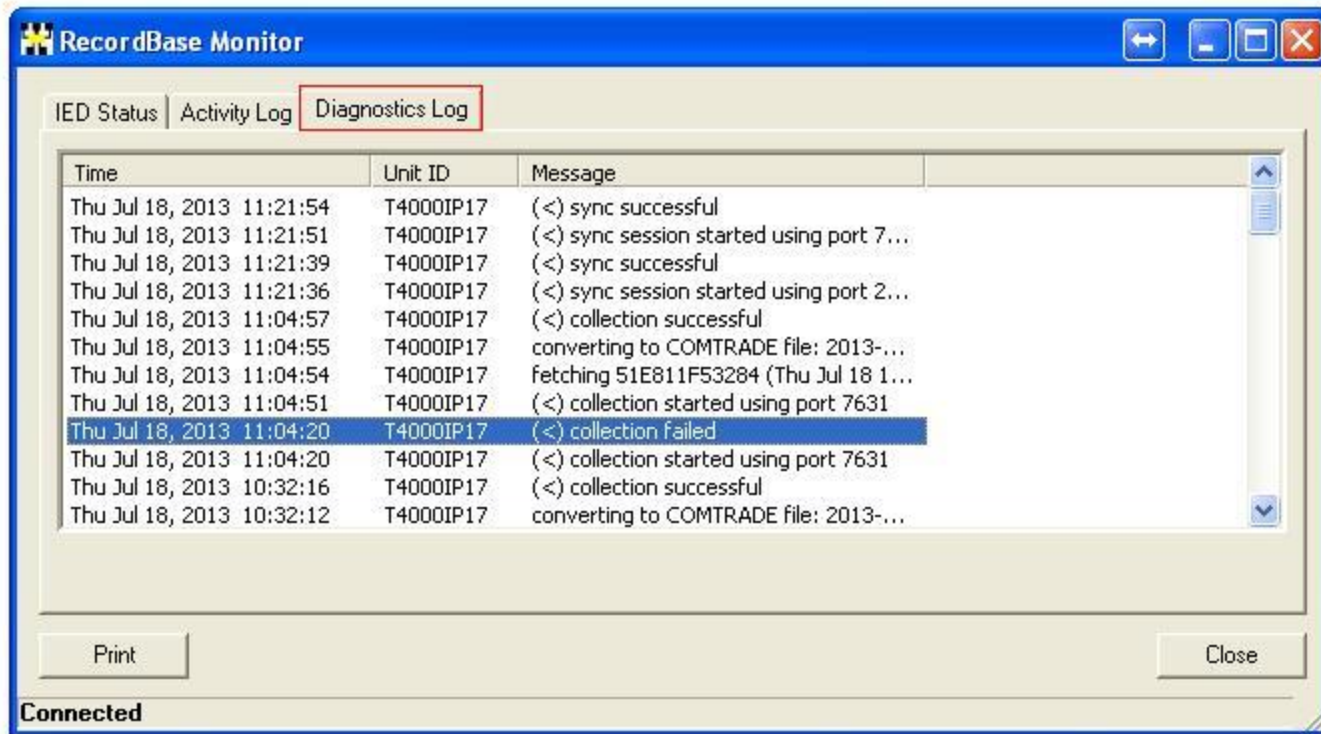
Monitor Activity Log

- The Activity Log tab allows the user to monitor the calls made in each device inside the system.



Monitor Diagnostic Log

- The Diagnostic Log provides details of communication difficulties, such as repeated busy signals, loss of connection and data errors.





Questions?

Call Technical Support

ERLPhase Power Technologies

Winnipeg, MB Canada

+1 (204) 477-0591 Option 1

support@erlphase.com