

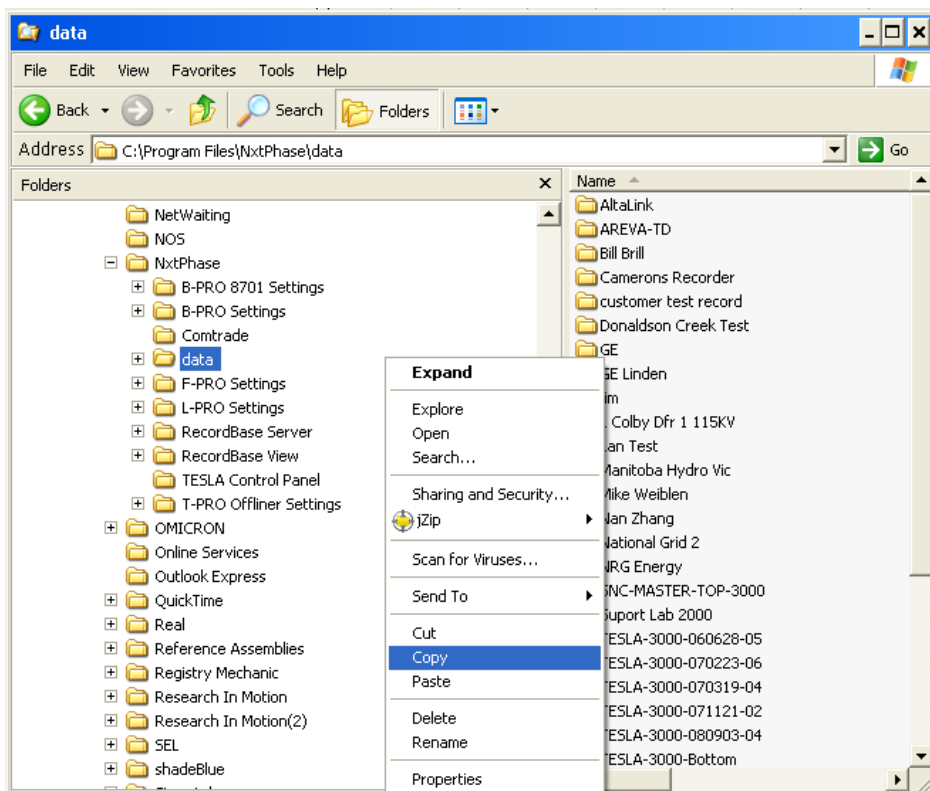
## Transferring TESLA IED Control Panel Information to a New Computer

This application note describes the procedure used to transfer existing TESLA IED information from one computer (older) to another computer (newer). After installing TESLA Control Panel on the new computer, the user can follow this procedure to **transfer their entire** TESLA recorder IED data from the old computer to the new computer.

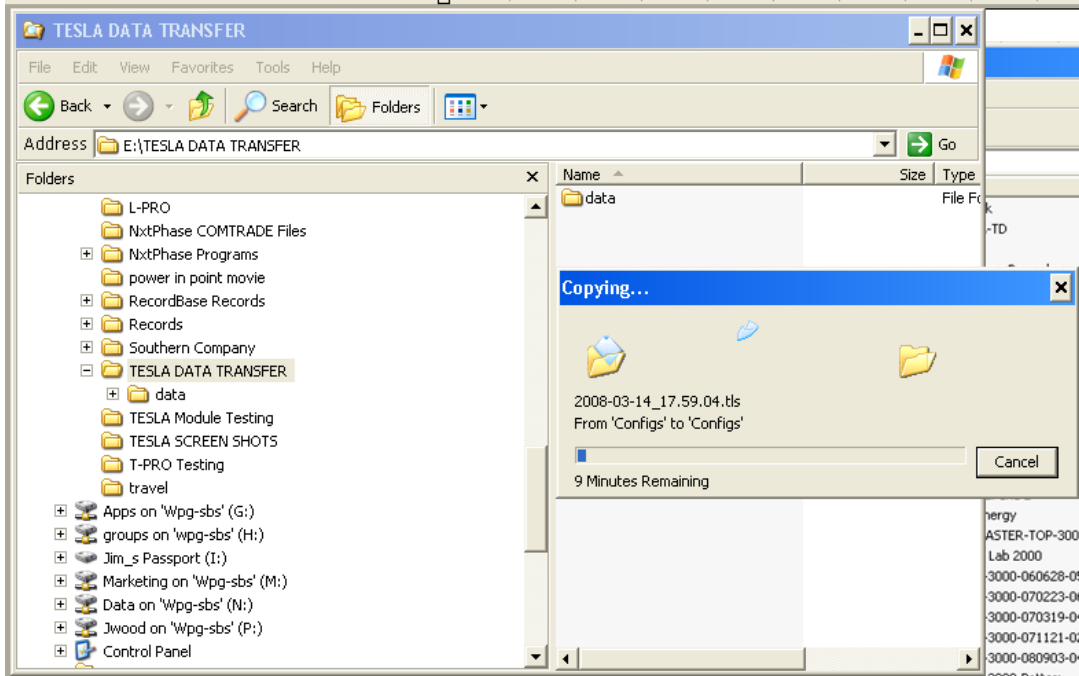
This procedure involves transferring two data volumes. The first is the entire TESLA Control Panel Data directory (contains the information for all of the TESLA recorders installed on their system). The second data volume for the TESLA Control Panel IED is in Microsoft's registry operating system data entries.

### Copy TESLA Control Panel Data Directory

1. Install TESLA Control Panel on the new computer.
2. Insert a removable storage device, such as a USB thumb drive, into the old computer. If a network connection is available between the old and new computers, the user may perform this procedure over the corporate LAN using a shared temporary storage directory. A USB drive was used for this application note.
3. Open Windows Explorer on the old computer and go to the following location: C:\Program Files\NxtPhase. Select the Data directory and copy it to the Windows clipboard, as shown below:

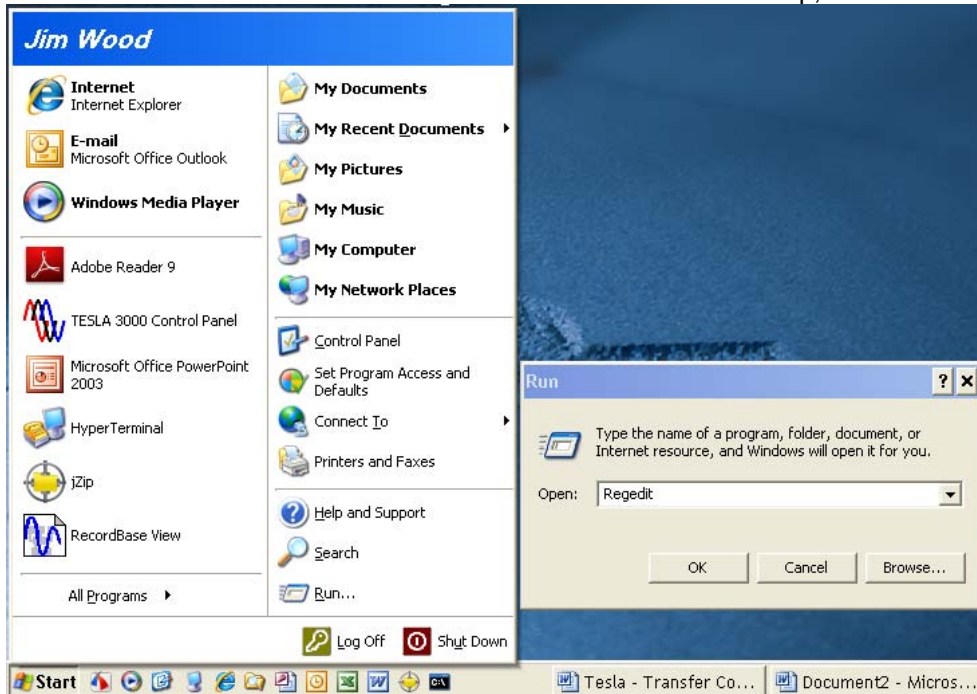


- Next, paste the copied Data directory to the temporary storage location on a thumb drive:

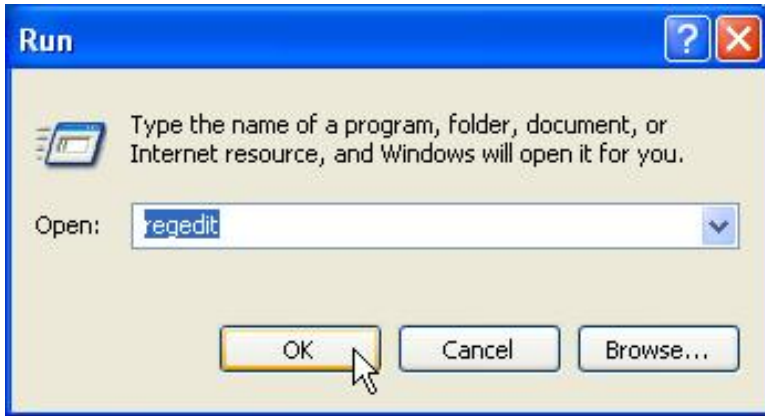


## Copy TESLA Control Panel Registry Entry

- Click the Windows Start button in the lower left corner of the desktop, then click Run.

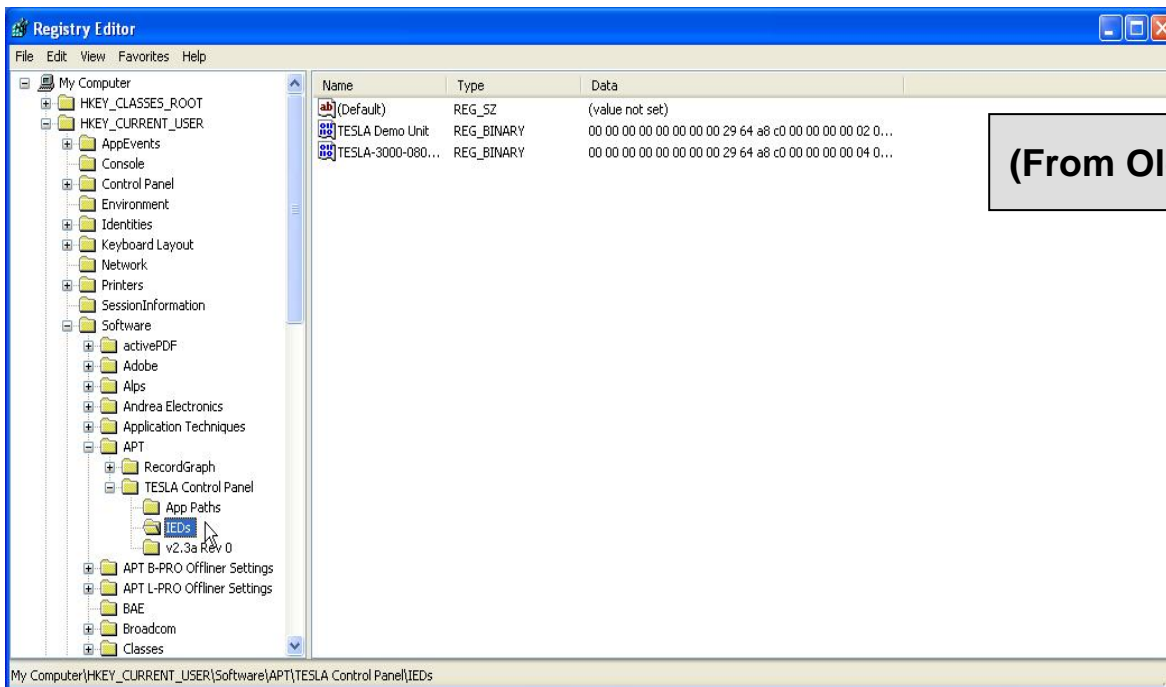


- When the Run window pops up, enter "regedit" in the Open field then click OK.

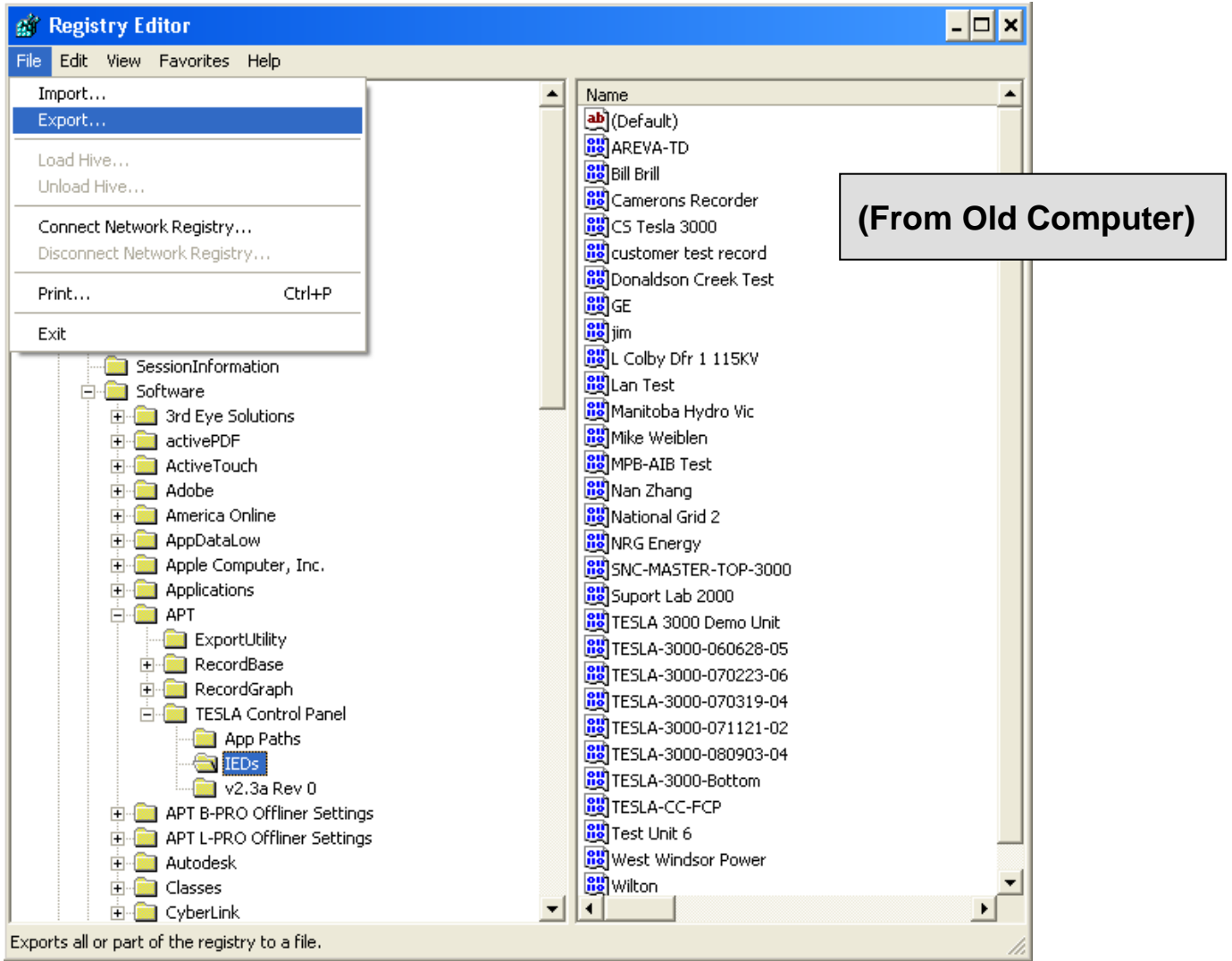


- Navigate through the Registry tree structure until the TESLA Control Panel IEDs directory is highlighted:

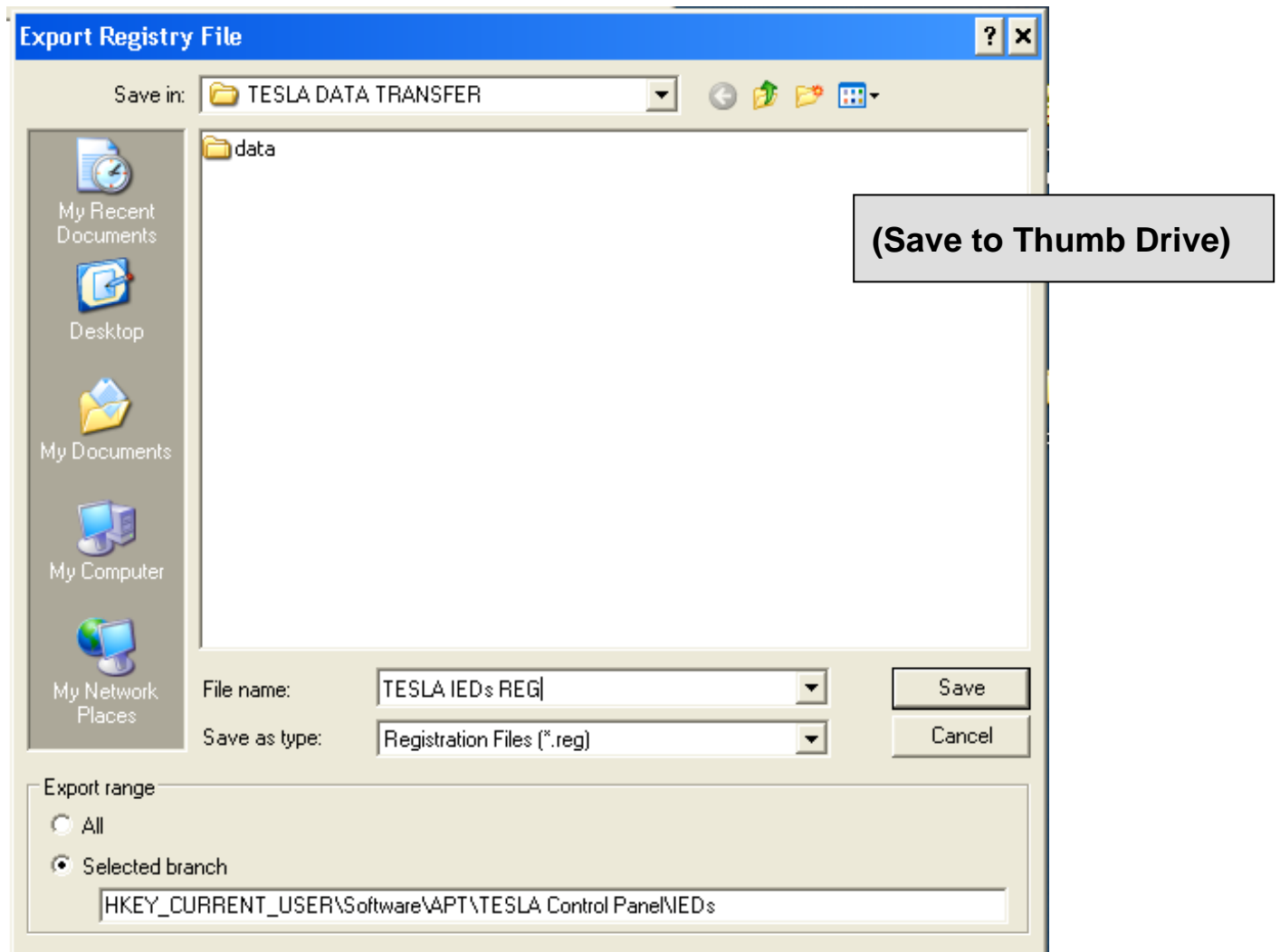
Find the IED directory in Registry Editor (under My Computer\HKEY\_CURRENT\_USER\Software\APT\TESLA Control Panel "IED"), and select "File" from the drop down menu.



4. Then select and click the Export function under the “File” drop down menu:

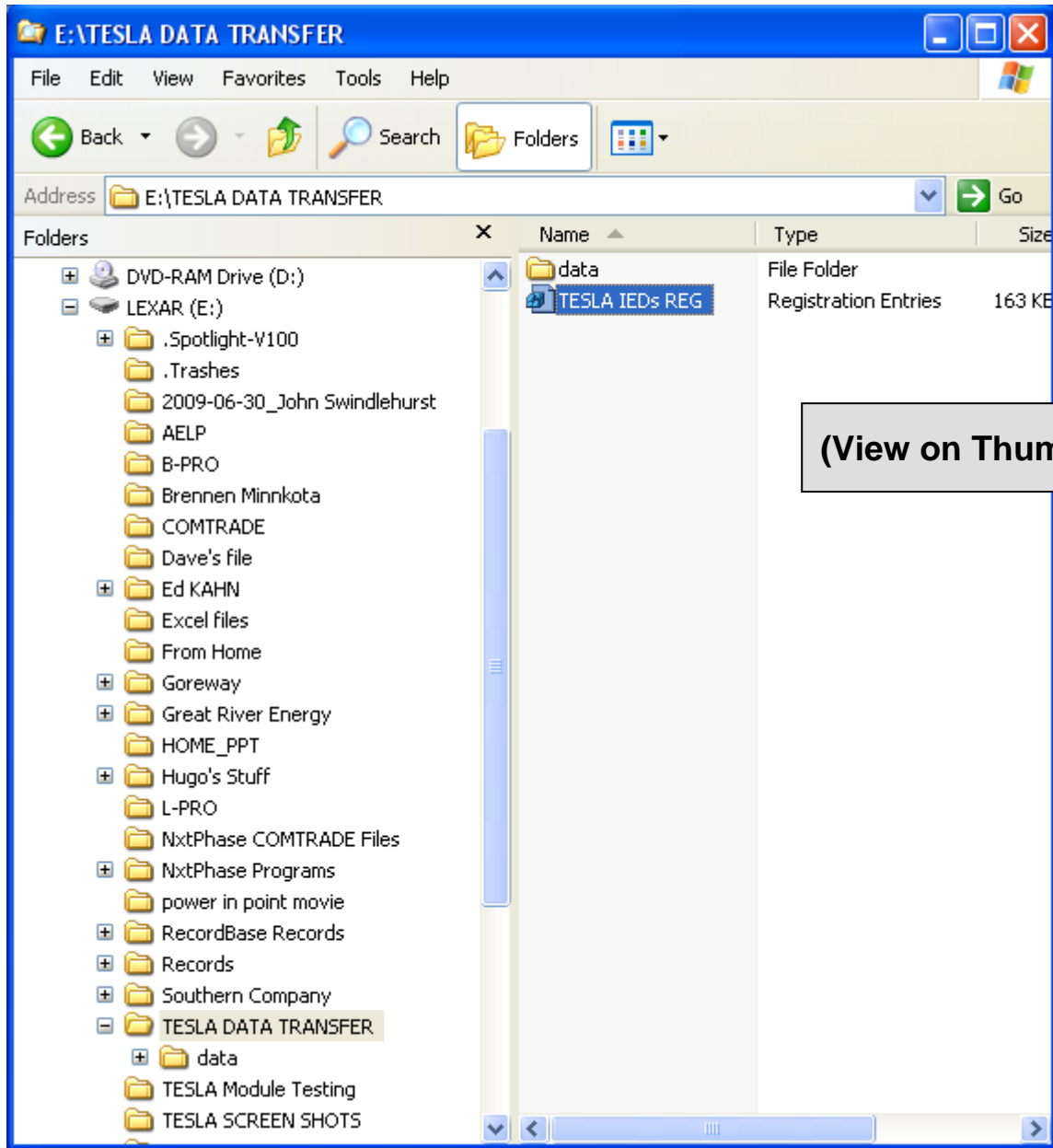


5. Direct the export function to save the export registry file to the temporary storage location (thumb drive). A file name must be entered. TESLA IEDs REG was used in this case:



Note: Under "Export Range (bottom right); choose "Selected branch".

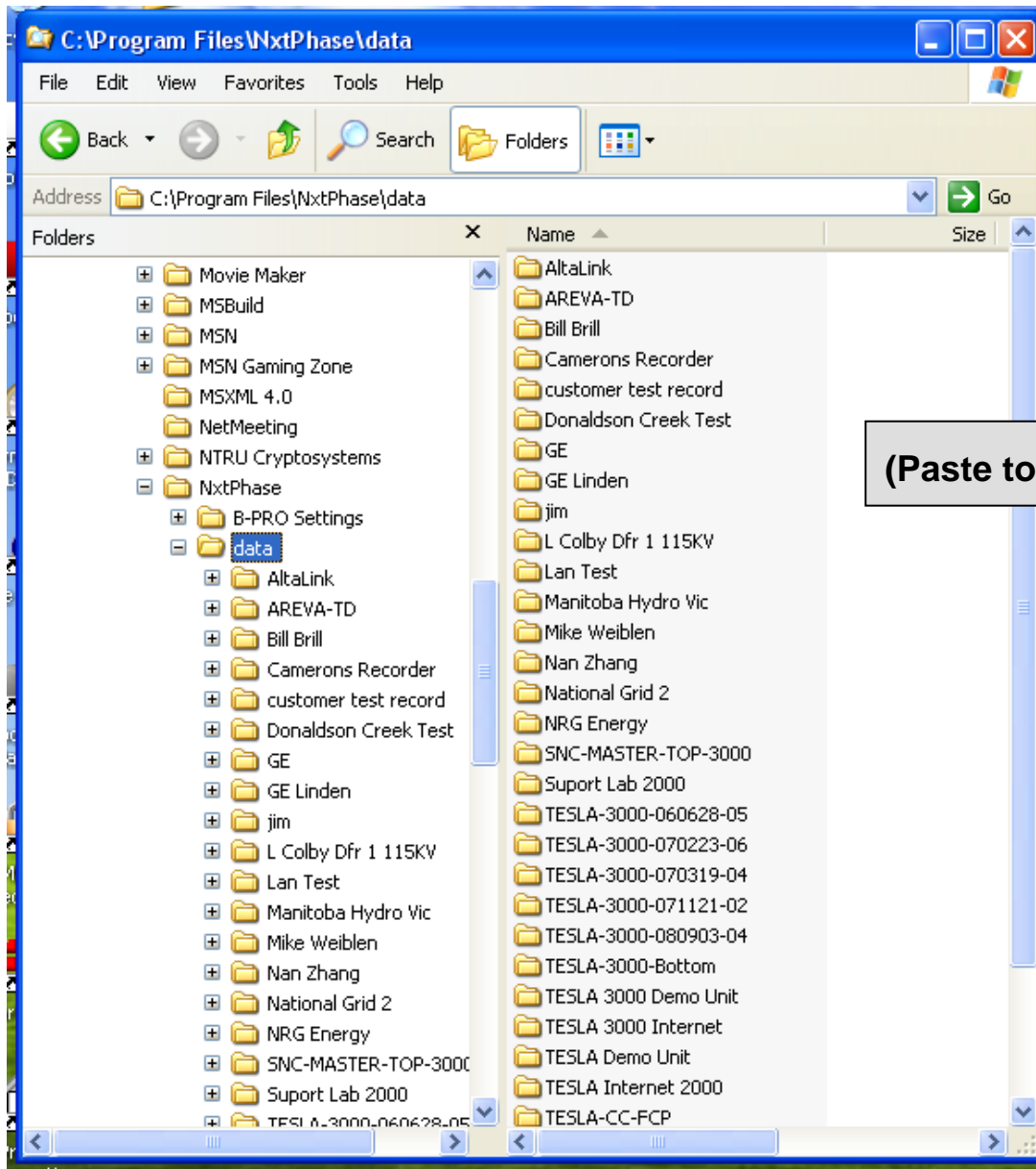
- All of the existing data from the old computer is stored in the temporary storage location and can now be transferred and installed on the new computer. Remove the thumb drive from the old computer and connect it to the new computer.



7. Paste TESLA Control Panel Data Directory.

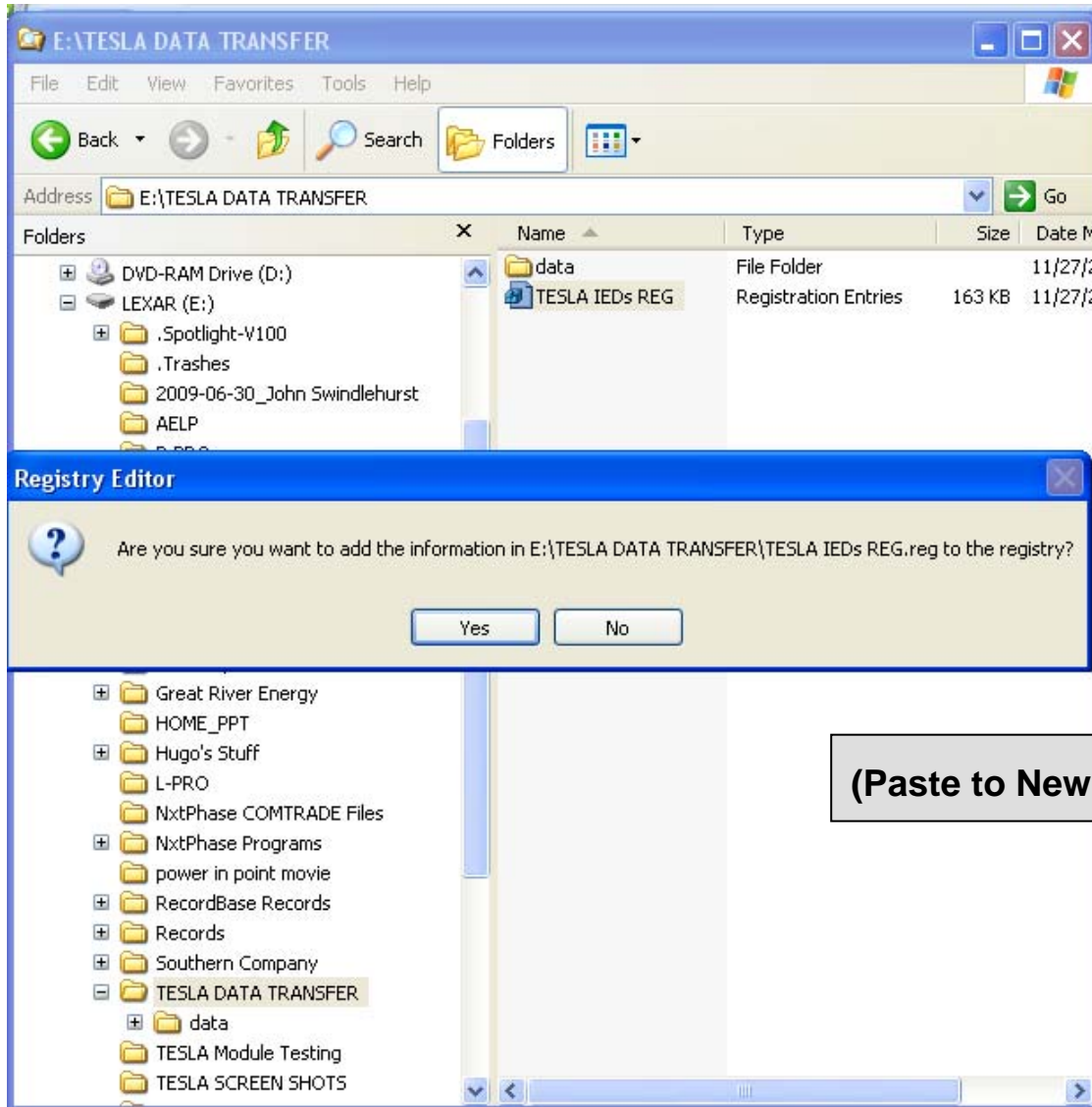
Open Windows Explorer on the new computer and go to the following location:

**C:\Program Files\NxtPhase**. Select the Data directory on the thumb drive, then paste the data directory from old computer into the same location on the new computer.



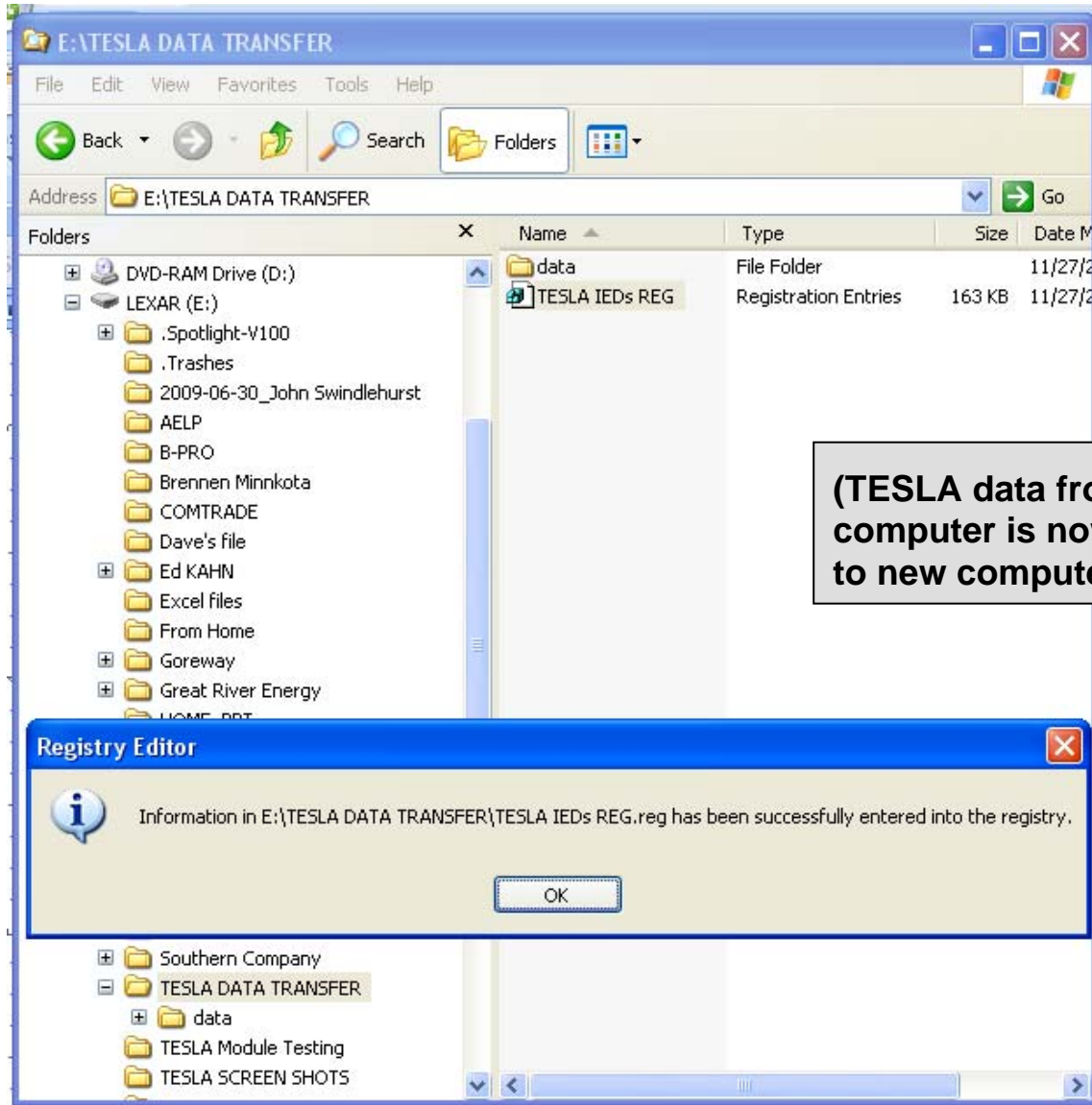
8. Paste TESLA Control Panel Registry Entry.

With Windows Explorer still open on the new computer, and go to the thumb drive and double click on the Registry file ICON. Then answer "Yes" when prompted to add the information to the new computer's registry





9. When completed, a confirmation window will pop up. Simply click OK:



**(TESLA data from old computer is now transferred to new computer)**

All of the existing TESLA Records IED information from the old computer's TESLA Control Panel is now on the new computer and available to the new TESLA Control Panel application.